



**MOUNT
WASHINGTON**
ALPINE RESORT

WINTER 2025/26

SNOW SPORTS RECREATION GUIDE!

GROUP & PRIVATE LESSONS > SEASONAL PROGRAMS & CAMPS
SCHOOL GROUPS > RENTALS, DEMOS & GEAR SERVICES
INSTRUCTOR COURSES > SPECIAL EVENTS & MORE FUN TIMES

PLUS: MISSION AFFORDABLE, SUMMER CAMPS & ACTIVITIES!



NEW FOR NIGHT SKIING!

NOW OPERATING THURSDAY, FRIDAY & SATURDAY

Night skiing and riding is a special experience at the mountain, from the dark starry skies of the holiday season, to the stunning springtime sunsets. *NEW this year, we're operating regularly on Thursday nights!* Start your weekend off elevated under the night sky. Stay tuned to the website for details about special holidays and occasional Sundays.

NIGHT SKIING | 3:30 PM - 9:00 PM
THURSDAY TO SATURDAY & SPECIAL HOLIDAYS!



NEW! THE 3
MAGIC CARPETS
ARE OPEN FOR
FRIDAY NIGHTS!
FROM 3:30 - 7PM



FRIDAY NIGHT
LIFT TICKETS
STARTING AT
ONLY \$5!
FROM 3:30 - 9PM

MISSION
AFFORDABILITY

FAMILY FRIDAY NIGHTS

YOUR CREWS FAVOURITE WINTER
TRADITION STARTS HERE!

Weekly on Friday, starting December 19th, gather the family for a fun discounted evening on the slopes. *NEW this season, the 3 Beginner Carpets will be open Fridays until 7pm!* Our Family Friday discounted packages includes lift tickets and rentals, with options to add a 2-hour private lesson for an extra cost.

After the mountain fun, enjoy family-oriented après and new dinner specials.

PACKAGES FROM:
CHILD \$15 | YOUTH \$30 | ADULT \$40



Book online or call our sales team at 250-338-1386 | mountwashington.ca

TABLE OF CONTENTS

ALPINE

| | |
|--|---|
| Night Skiing & Family Fridays..... | 2 |
| Plan Your Trip..... | 4 |
| DISCOVERY DAYS: LEARN TO SKI FREE..... | 5 |
| Ability Levels Guide..... | 6 |

TOT & CHILD

| | |
|-----------------------------------|----|
| First Time Lessons..... | 10 |
| Group Lessons..... | 11 |
| Seasonal Programs..... | 12 |
| Camps and Specialty Programs..... | 13 |

YOUTH

| | |
|-----------------------------------|----|
| First Time Lessons..... | 15 |
| Group Lessons..... | 16 |
| Camps and Specialty Programs..... | 17 |

PRIVATE LESSONS

| | |
|--------------------------------|----|
| Family Lessons & skiKrumb..... | 19 |
|--------------------------------|----|

ADULT

| | |
|------------------------------------|----|
| First Time Lessons..... | 20 |
| Group Lessons..... | 21 |
| Camps and Specialty Programs..... | 22 |
| Womens Week & Never Ever Days..... | 23 |

RENTALS

| | |
|--|----|
| Starter Package Deals..... | 24 |
| Gear Tuning Services & Boot Fitting..... | 25 |
| Demos & High Performance Rentals..... | 26 |

EVENT CALENDAR HIGHLIGHTS

| | |
|-------------------------|----|
| BEAR'S DEN DAYCARE..... | 33 |
| GOLD PASS PERKS..... | 34 |
| GROUPS & WEDDINGS..... | 35 |
| SHOPPING & TUBING..... | 36 |
| SUMMER OFFERINGS..... | 37 |
| INSTRUCTOR COURSES..... | 40 |

NORDIC

| | |
|---|----|
| Discovery Days & Nordic Fest..... | 43 |
| First Time Lessons..... | 44 |
| Privates & Group Lessons..... | 45 |
| Snowshoe Tours..... | 46 |
| Seasonal Programs, Clinics & Tours..... | 47 |
| Rentals, Retail & Services..... | 48 |

SNOWSHOE FONDUE

SLOPESIDE LODGING

LETTER FROM THE GENERAL MANAGER:

A SEASON OF CHANGES.

Learn more about the fresh outlook
ahead for the community of Mount
Washington Alpine Resort.

"Hello Mount Washington!

Over the last few months, our team and I have embarked on new adventures as we prepare for the 2025/26 ski season. Many of you have reached out with support regarding recent changes within our management team. Your encouragement means a great deal to us, and we are excited to have a dynamic group of leaders, driven by skiing, that are dedicated to delivering your resort experience.

I have been incredibly fortunate to be part of this special mountain community for nearly 25 years. That time has allowed me to connect with multiple generations of pass holders, our mountain clubs, and village owners. It is not lost on me that our team has the honour and privilege of hosting Vancouver Island's skiing community..."

Continue reading more from Mike on the inside back cover, page 51.

MISSION
AFFORDABILITY



Please note: All prices and programs are subject to change without notice. Pricing listed in the Recreation Guide reflects the pre-booking discount. An additional cost will be applied for bookings made on the day.



RECREATION
GUIDE



Winter 2025/26



Vancouver Island, BC



888-231-1499



@mountwashington



www.mountwashington.ca



3

YOUR AMAZING DAY STARTS HERE!

8 EASY STEPS TO HIT THE SLOPES SUCCESSFULLY WITH STYLE

① DRESS TO BE OUTSIDE

Mount Washington does not rent winter jackets, pants, gloves, or goggles. Please bring your own or visit Outdoor Elements to purchase.

② ARRIVE & WALK TO MAIN LODGE

Look for respective Nordic and Alpine Lodge signs. Allow extra time with children. Parking can be difficult on busy days. **Approx 15 mins.**

③ CHECK IN AT SNOWSPORTS BUILDING

The alpine snowsports entrance is the first door of the parking lot. Proceed downstairs, through the chunnel, and onto the rentals floor. **Approx 15 mins.**



④ PICK UP LIFT TICKET & RENTALS FORM

Bring your entire family to the till. Have your reservation number handy. Tickets and rentals are all in one place. **Approx 5 mins.**

⑤ TRY ON BOOTS

A good fit will help your on-snow experience. Stand up, walk around, and make sure you've got the right size. **Approx 10 mins.**



⑥ GET FITTED FOR SKIS/BOARDS

Our rental techs will adjust your rental equipment to best fit your weight and ability level. **Approx 10 mins.**

⑦ STORE BAGS + WASHROOM BREAK

Lockers are available for \$1. Last chance for the washroom before heading out. **Approx 10 mins.**

⑧ WALK TO LESSON MEETING AREA

Meet your instructor outside the signed meeting zone approximately 10 mins. before the lesson begins.



PLEASE ALLOW AT LEAST 75 MINUTES FOR THIS ARRIVAL PROCESS.

INSTRUCTIONS FOR LESSON DAY

- Allow a minimum of 1.25 hours (75 minutes) between your arrival in the resort or departing your condo and the lesson start time (i.e. for a 9:30am lesson, arrive by 8:15am).
- If you already have equipment please proceed directly to outdoor lesson meeting areas. If you require a pass please visit the Ticket Windows outside of the Alpine Lodge.
- You are responsible for supervising your child (4+ years) prior to meeting the instructor on the snow 10 minutes prior to the scheduled lesson start time.
- Please be aware that all lessons start promptly at the scheduled start time regardless of weather conditions or reduced lift operations. There are no refunds on missed lessons.
- You are responsible for meeting your child in the assigned meeting place outside Mountain Kids. Mount Washington is responsible for supervising your child during scheduled lesson times only. Tots will not be released on their own and you may be charged for additional care.

LESSON CANCELLATION POLICY

- All lessons must be paid in full at the time of booking.
- Lessons can be cancelled or rescheduled more than 48 hours in advance. Please contact the Snow School: Phone: 250-338-1386 ext. 384 Email: cancellations@mountwashington.ca.
- There are no refunds or changes allowed within 48 hours of the lesson time, unless due to medical issue or illness.
- For camps and seasonal programs there are no refunds or changes allowed after day 1, unless due to medical issue or illness.
- No refunds will be issued due to weather conditions.
- Guests who are late for their lesson will not be able to join. We will do our best to rebook for later that day.



DISCOVERY DAYS (13+)

DECEMBER 12 - 19, 2025, FEBRUARY 16 2026, & MARCH 30 - APRIL 5, 2026

Skiing or snowboarding is more than just an activity, it's a full-day mountain experience. That's what makes it so special and why we think everyone deserves to give it a try! For anyone ages 13+ who has never skied or snowboarded before. **Learn FREE** this winter with Discovery Days.** This package includes a 2-hour beginner lesson, full day Easy Acres lift ticket, and equipment rentals. Advanced booking is required.

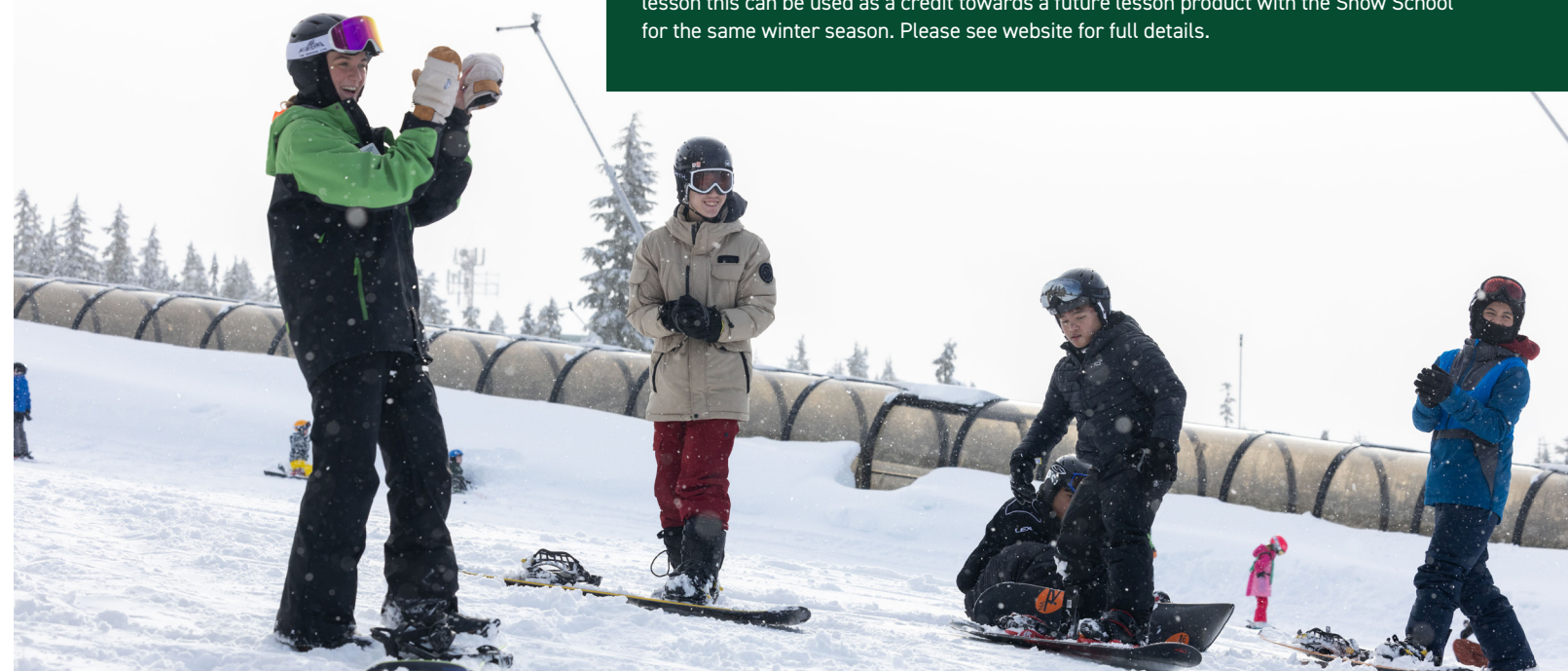
NEW! SINGLE-DAY OPTIONS FOR KIDS (7-12):

New this year, children ages 7-12 can participate to Learn FREE** on Saturday, December 20, 2025, Monday, February, 16 2026 and Friday, April 3, 2026.

****\$25 administration fee** will be charged at the time of booking. Upon completion of the lesson this can be used as a credit towards a future lesson product with the Snow School for the same winter season. Please see website for full details.

NEW KIDS ADDITION!

**LEARN
TO SKI OR SNOWBOARD
FREE**



Advanced booking required. Please visit mountwashington.ca/events for details.

SKIER ABILITY GUIDE

Use our easy-to-follow guide to rate you or your child's ability level for lessons, seasonal and drop-in programs.



SNOWBOARD GUIDE

Once you have completed each milestone & checked each point in the level, you can move onto the next one!



SKIING TOTS (AGES 2-6)

DISCOVER SKIING First Time Skier ●

Welcome to the sport of skiing!

- ☐ First time skiing
- ☐ Shows a balanced stance in a straight run
- ☐ Consistently able to independently snowplow stop

BEARS Beginner Skier ●

Skis Green terrain in Easy Acres

- ☐ Can snowplow turn left and right
- ☐ Maintains control in easy acres terrain



MARMOTS Novice Skier ●■

Skis Green and Blue terrain off the Hawk Chair

- ☐ Maintains control on green runs & blue runs
- ☐ Starting to adventure into varied easy terrain
- ☐ Stands up by themselves



COYOTES Intermediate Skier ■

Skis Blue terrain on the Hawk & Eagle Chair

- ☐ Balanced over turning ski
 - ☐ Wide stance parallel turns on all green runs
 - ☐ Maintains turn shape and speed control on blue runs
- Optional: Introduction to small park features



EAGLES Advanced Skier ◆

Skis Black/Double-Black terrain on Eagle & Sunrise Chair

- ☐ Shows a variety of turn sizes with a pole plant
- ☐ Confident in varied terrain and skis wide stance parallel
- ☐ Displays edging skills on blue runs
- ☐ Explores the beginner terrain park



WOLVES Expert Skiers ◆◆ NEW! (Mighty Tots Seasonal Program Only)

Skis Black/Double Black Diamond terrain on Eagle and Boomerang Chair

- ☐ Can skillfully link turns in varied terrain
- ☐ Can pole plant effectively
- ☐ Can carve with both skis through the bottom of the turn on Eagle chair terrain
- ☐ Enjoys the challenge of boxes and jumps in the terrain park



SKIING AGES 7+

DISCOVER SKIING First Time Skier ●

Welcome to the sport of skiing!

- ☐ First time skiing
- ☐ Can consistently snowplow stop

LEVEL 1 Beginner Skier ●

Skis Green terrain in Easy Acres

- ☐ Can consistently snowplow stop
- ☐ Shows a balanced stance in a straight run
- ☐ Can turn left and right

LEVEL 2 Novice Skier ●■

Skis Green and some gentle Blue terrain off Hawk Chair

- ☐ Shows control on green and blue terrain on Hawk Chair
- ☐ Familiar with riding Hawk Chair
- ☐ Starting to ski parallel on Green terrain
- ☐ Starting to adventure into varied easy terrain

LEVEL 3 Intermediate Skier ■

Skis Blue terrain on the Eagle Chair

- ☐ Parallel turns blue runs
 - ☐ Balanced over turning ski
 - ☐ Showing coordination of movements for edging and pressure control
 - ☐ Exploring varied terrain, turns with traverse
- Optional: Introduction to small park features

LEVEL 4 Advanced Skier ■◆

Skis Blue/Black terrain on the Eagle & Sunrise Chair

- ☐ Strong parallel turns with a pole plant on blue/black groomed runs
 - ☐ Skis at a moderate pace on varied terrain, still cautious
 - ☐ Linking turns, with traverse in the bumps
- Optional: working towards Instructor Certification

LEVEL 5 Expert Skier ◆◆

Skis Black/Double Black on Eagle, Outback & Sunrise Chairs

- ☐ Skis parallel confidently on black/double black diamond runs
 - ☐ Working on short turns in black/double black un-groomed terrain
 - ☐ Can ski at a faster pace on all runs and in all conditions
 - ☐ Experimenting with different turn shapes in all terrain
- Optional: working towards Instructor Certification

SNOWBOARDING TOTS (AGES 2-6)

DISCOVER SNOWBOARDING First Time Rider ●

Welcome to the sport of snowboarding!

- ☐ First time snowboarding
- ☐ Sideslips on toe or heel edge

GROMS Beginner Rider ●

Rides Green terrain in Easy Acres Terrain

- ☐ Sideslips on toe or heel edge with direction
- ☐ Stands up by themselves



SLIDERS Novice Rider ●■

Rides Green and Blue terrain on the Hawk Chair

- ☐ Can linked turns on a green run
 - ☐ Sideslip one edge on blue runs
- Optional: Introduction to small park features



SHREDDERS Intermediate Rider ■

Rides Blue terrain on the Hawk and Eagle Chair

- ☐ Directional sideslips on both toe and heel edge on blue runs
 - ☐ Controlled linked turns on gentle blue runs
 - ☐ Exploring varied blue terrain
- Optional: Gaining confidence in beginner park



FREERIDERS Advanced Rider ◆

Rides Black terrain on Eagle and Sunrise Chair

- ☐ Link turns on black runs, with carving skills
- ☐ Confident turns on varying terrain
- ☐ Riding switch on blue runs



SNOWBOARDING AGES 7+

DISCOVER SNOWBOARDING First Time Rider ●

Welcome to the sport of snowboarding!

- ☐ First time snowboarding
- ☐ Learning to control speed and direction

LEVEL 1 Beginner Rider ●

Rides Green terrain in Easy Acres

- ☐ Can control speed and direction on both heel and toe edges
- ☐ Learning to link turns and developing smoother turns on easy green runs

LEVEL 2 Novice Rider ●■

Rides Green and Blue terrain off the Hawk Chair

- ☐ Can confidently link turns on green runs and working toward gentle blue runs
 - ☐ Shows comfort and mobility on board with body positions
 - ☐ Starting to explore some basic freestyle maneuvers (mini-ollies, 360s on snow, switch turns)
- Optional: Introduction to small park or freestyle features

LEVEL 3 Intermediate Rider ■

Rides Blue terrain on the Hawk and Whiskey Jack Chair

- ☐ Comfortable turning on blue runs and refine carving skills on green terrain
 - ☐ Beginning to explore ungroomed terrain and riding switch
 - ☐ Learning to create small airs with ollies, nollies, and natural feature pops
- Optional: ride straight over small terrain park features

LEVEL 4 Advanced Rider ■◆

Rides Blue/Black terrain on the Eagle & Sunrise Chair

- ☐ Comfortable turning on black groomed terrain and blue varied terrain
- ☐ Starting to carve on blue terrain
- ☐ Riding switch on green runs with ease and control and exploring with switch on blue runs
- ☐ Optional: comfortable in small terrain park and starting to explore the large terrain park

LEVEL 5 Expert Rider ◆◆

Rides Black/Double Black on Eagle, Outback & Sunrise Chairs

- ☐ Creating variation in riding, while managing speed on black terrain
 - ☐ Comfortable on ungroomed double black runs
 - ☐ Able to land balanced on small drops
- Optional: Multiple maneuvers performed consistently in large terrain park

6IXPAK

SHARE THE ADVENTURE,
SHARE THE SAVINGS.

GET
EARLY BIRD
SAVINGS!
PURCHASE BY
DEC 1, 2025

Mount Washington 6IXPAKs are a group of six deeply discounted activity tickets that can be used any day of the winter season. Available for both alpine and Nordic access.

Split your 6IXPAK to share with friends, give to family, or use entirely for yourself. Either way, you'll be enjoying savings, convenience, and flexibility for your winter mountain adventures.

6IXPAKs are in limited supply, so plan ahead and buy early! Available through our website or at your local Quality Foods (alpine only, Nordic is purchased at Raven Lodge).

| ALPINE | EARLY BIRD* | REGULAR** |
|----------------|-------------|-----------|
| Child (7-12) | \$319 | \$349 |
| Youth (13-18) | \$469 | \$539 |
| Senior (65-74) | \$469 | \$539 |
| Adult (19-64) | \$559 | \$629 |

Alpine 6IXPAK tickets offer direct-to-lift access for more time on snow!

| NORDIC | EARLY BIRD* | REGULAR** |
|----------------|-------------|-----------|
| Child (7-12) | \$89 | \$99 |
| Youth (13-18) | \$119 | \$129 |
| Senior (65-74) | \$119 | \$129 |
| Adult (19-64) | \$149 | \$159 |

*Early Bird price: until December 1st

**Regular price: December 2nd onward

The best deal to access activities together! Learn more mountwashington.ca/6IXPAK

LEARN TO TURN

Mount Washington's Learn to Turn program is a combination of three of our most successful and popular programs to help you get out on the slopes faster and with more confidence. We have combined our Discover Skiing/Snowboarding package with an additional two group lessons, rentals, and two all mountain lift passes. You save up to 50% compared to paying separately!

> mountwashington.ca/learn-to-turn

ADDITIONAL BENEFITS (available after completion)

*Additional benefits available for ages 13+.

- > Upgrade to a season pass \$119
- > Select gear packages 50% off



ROOKIE YEAR

Rookie Year is a ground-breaking all-inclusive program designed specifically for tots and children who are first-time skiers and boarders. Unique to Mount Washington, the Rookie Year Program includes, a seasons-pass, seasonal rentals for skiing or snowboarding and 5 afternoon half-day group lessons with a snack in our Snow School.

> mountwashington.ca/rookie-year

LEARN TO TURN: BONUS OFFERS!

\$119 SEASON PASS AVAILABLE TO GUESTS WHO COMPLETE OUR PROGRAM!

- Must be 13 years or older as of December 31st, 2025
- Must have completed all 3 "Learn to Turn" lessons
- Must be your first season on snow regardless of discipline
- Bonus offers are non-transferable
- Offer is only available on full equipment package
- Not eligible if you have had an alpine season pass in previous years
- Applicable on select gear packages only, inquire with our team for details
- If you are switching disciplines from skiing to snowboarding, or vice versa, we are happy to offer you the discounted lesson package. However, this precludes you from being eligible for the bonus offers.

Save 50% off after completing the Learn to Turn program, and enjoy the freedom of owning your gear and visiting any day with a Season Pass.

SAVE UP TO
50%



GET OVER
\$400
IN SAVINGS



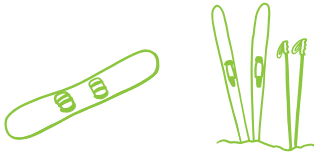


BEGINNER LESSONS: FIRST TIME ONLY

DISCOVER SKIING & SNOWBOARDING

Welcome to the sport of Skiing and Snowboarding! Our Group Lesson Packages for beginners include an Easy Acres lift ticket, rental equipment (skis/board, boots, poles, helmets), and either a 2.5-hour half-day lesson with a snack break or a full-day with 5-hours of instruction and two snack breaks. Add lunch for a complete day of supervised fun on the slopes!

| CATEGORY | AGES | AVAILABILITY | PRICE |
|---|------------------------------|---|-------|
| Tot Half Day | 4-6 (Ski) 5-6 (Snowboard) | Daily 9:30am or 1pm | \$84 |
| Tot Full Day | 5-6 (Ski) 5-6 (Snowboard) | Daily 9:30am - 12pm and 1pm - 3:30pm | \$154 |
| Child Half Day | 7-12 | Daily 9:30am or 1pm | \$94 |
| Child Full Day | 7-12 | Daily 9:30am - 12pm and 1pm - 3:30pm | \$164 |
| Supervised Lunch to Full Day Group Lesson | 5-12 | Daily 12pm - 1pm | \$14 |



BACK THIS WINTER!

Our kids and tots lessons are now 2.5-hours long. That means more time to develop your child's skiing and riding skills and more time for you to have fun on the mountain!

NIGHT DISCOVER SKIING & SNOWBOARDING

Learn to Ski or Snowboard at night! This package includes a beginner lift ticket, rental equipment (eg. Skis/snowboard, boots, poles, and helmet) and a 2-hour beginner lesson. **No snack break.*

| CATEGORY | AGES | AVAILABILITY | PRICE |
|--------------------|------|--|-------|
| Child Night Lesson | 7-12 | 4pm Thursdays, Saturdays and Christmas Holidays | \$54 |

RETURN TRIP

A return package that provides a discounted rate after completion of the Discover Skiing/Snowboarding program. Includes an all-mountain lift pass, half-day 2.5-hour lesson with snack and rentals.

| CATEGORY | AGES | AVAILABILITY | PRICE |
|----------|------------------------------|------------------------|-------|
| Tot | 4-6 (Ski) 5-6 (Snowboard) | Daily 9:30am or 1pm | \$94 |
| Child | 7-12 | Daily 9:30am or 1pm | \$114 |

LEARN TO TURN

Mount Washington's Learn to Turn Program is a combination of three of our most successful and popular programs to help you get out on the slopes faster and with more confidence. We have combined our Discover Skiing/Snowboarding package with an additional two half-day group lessons, rentals, and two all mountain lift passes. You save up to 50% compared to paying separately!

| CATEGORY | AGES | PRICE |
|----------|------------------------------|-------|
| Tot | 4-6 (Ski) 5-6 (Snowboard) | \$274 |
| Child | 7-12 | \$324 |

FIRST-TIME LESSONS CONT.

ROOKIE YEAR

Rookie Year is a ground-breaking all-inclusive program designed specifically for tots and children who are first-time skiers or snowboarders. Unique to Mount Washington, the Rookie Year Program includes a season pass, seasonal rentals for skiing or snowboarding and 5 afternoon half-day group lessons with a snack in our Snow School.

| CATEGORY | AGES | PRICE |
|------------------------------|------|-------|
| Tot (4-6 ski, 5-6 snowboard) | 4-6 | \$464 |
| Child | 7-12 | \$664 |

ADD-ON: Additional 5 lessons **\$419**

TOT & CHILD GROUP LESSONS

Group Lessons are a great way to learn with others of similar ability. Classes are kept small and instructors are trained to deal with varying abilities so that the learning environment is kept fun and active. Half-day group lessons are 2.5-hours in length and include a snack. Full-day lessons include 5-hours of instruction and 2 snack breaks. Add lunch for a fully supervised day of fun on the slopes!

TOTS (AGES 4-6 FOR SKI, 5-6 FOR SNOWBOARD)

| CATEGORY | AGE | AVAILABILITY | PRICE |
|---|-----|---|-------|
| Half Day Ski Lesson <i>Bears-Eagles</i> | 4-6 | Daily 9:30am or 1pm | \$104 |
| Full Day Ski Lesson <i>Bears-Eagles</i> | 5-6 | Daily 9:30am - 12pm and 1pm - 3:30pm | \$174 |
| Half Day Snowboard Lesson <i>Groms-Freeriders</i> | 5-6 | Daily 9:30am or 1pm | \$104 |
| Full Day Snowboard Lesson <i>Groms-Freeriders</i> | 5-6 | Daily 9:30am - 12pm and 1pm - 3:30pm | \$174 |
| 5 Pack Group Lessons <i>(After purchase call our sales team to book individual lessons)</i> | 4-6 | Daily 9:30am or 1pm | \$419 |
| Supervised Lunch to Full Day Group Lesson | 5-6 | 12pm - 1pm | \$14 |

CHILD (AGES 7-12)

| CATEGORY | AGE | AVAILABILITY | PRICE |
|---|------|---|-------|
| Half Day Ski & Snowboard Lessons <i>Levels 1-5</i> | 7-12 | Daily 9:30am or 1pm | \$104 |
| Full Day Ski & Snowboard Lessons <i>Levels 1-5</i> | 7-12 | Daily 9:30am - 12pm and 1pm - 3:30pm | \$174 |
| 5 Pack Group Lessons <i>(After purchase call our sales team to book individual lessons)</i> | 7-12 | Daily 9:30am or 1pm | \$419 |
| Supervised Lunch to Full Day Group Lesson | 7-12 | 12pm - 1pm | \$14 |

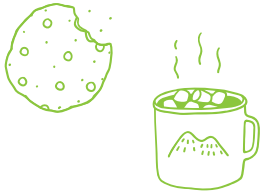


ADD ONS!

ADD rentals to any child/tot Snow School Lesson for \$30!

ADD a lift ticket for a child (7-12 Yrs) to any lesson for \$30. Tot lift tickets are free!

*Excludes Seasonal Programs



TOT & CHILD SEASONAL PROGRAMS

TINY TOTS (SKI ONLY, AGE 2 WITH PARENT)

5-week program: Introduce your tiny ones to the sport of skiing in a fun and safe environment! You and your tot will learn the basics of ski equipment, mobility, and beginner skiing skills through games and fun activities. Lessons take place in the Mountain Kids Courtyard. Our goal will be to have tots on the teaching carpet by the end of the program. Includes tot rentals and hot chocolate.

****Please note: Parents participation required, ideally on skis but not mandatory.**

| START DATE | AVAILABILITY | PRICE |
|-------------------------|--------------|-----------------------------------|
| January 10 (Saturdays) | 11am - 12pm | \$119 (early*) \$139 (regular) |
| January 11 (Sundays) | 11am - 12pm | \$119 (early*) \$139 (regular) |
| February 21 (Saturdays) | 11am - 12pm | \$119 (early*) \$139 (regular) |
| February 22 (Sundays) | 11am - 12pm | \$119 (early*) \$139 (regular) |



Book a second Mighty Tots session for the same child and save \$50! **Must be booked at the same time. Book over the phone or in person to receive discount.

Please note: *Early bird pricing ends December 1st for January start dates, Early bird pricing ends January 26th for February start dates. Classes are not offered over the Family Day weekend. The cancellation policy applies to all lessons and programs. See page 4 for all cancellation details.



LITTLE TOTS (SKI ONLY, AGE 3)

NEW THIS SEASON!

5-week program: New this winter! Get your little ones excited about the magic of skiing! Tots will learn the basics of ski equipment, how to move on skis, and beginner skills in Easy Acres. This lesson includes rentals and hot chocolate to end the lesson. Available for levels Discover - Marmot.

****Please note: This is for Disco, Bears & Marmot levels. Please see ability levels on Pages 6-7**

| START DATE | AVAILABILITY | PRICE |
|-------------------------|-------------------------------------|-----------------------------------|
| January 10 (Saturdays) | 9:00am - 10:30am or 1pm-2:30pm | \$184 (early*) \$204 (regular) |
| January 11 (Sundays) | 9:00am - 10:30am or 1pm - 2:30pm | \$184 (early*) \$204 (regular) |
| February 21 (Saturdays) | 9:00am - 10:30am or 1pm - 2:30pm | \$184 (early*) \$204 (regular) |
| February 22 (Sundays) | 9:00am - 10:30am or 1pm - 2:30pm | \$184 (early*) \$204 (regular) |

MIGHTY TOTS (SKIING AGES 4-6 / SNOWBOARDING AGES 5-6)

5-week program: Your Mighty Tots can enjoy 2.5-hour lessons with a snack to maximize skill development in a fun, safe and inclusive environment. Tots are grouped together in similar ability skiing and snowboarding classes with the same instructor for all 5-weeks.

****Please note: We've added an extra skiing ability level. Please see ability levels on Pages 6-7**

| START DATE | AVAILABILITY | PRICE |
|-------------------------|----------------------------------|-----------------------------------|
| January 10 (Saturdays) | 9:30am - 12pm or 1pm - 3:30pm | \$289 (early*) \$334 (regular) |
| January 11 (Sundays) | 9:30am - 12pm or 1pm - 3:30pm | \$289 (early*) \$334 (regular) |
| February 21 (Saturdays) | 9:30am - 12pm or 1pm - 3:30pm | \$289 (early*) \$334 (regular) |
| February 22 (Sundays) | 9:30am - 12pm or 1pm - 3:30pm | \$289 (early*) \$334 (regular) |

CAMPS & SPECIALTY PROGRAMS

MOUNTAIN KIDS HOLIDAY CAMP (SKIING AGES 4-12 / SNOWBOARDING AGES 5-12)

Join the Mountain Kids Holiday Camp during the Christmas Holidays, Family Day weekend or Spring Break! This 3-day camp focuses on skill development through fun, games and exercises. Mornings are spent working on skills, while the afternoon consists of games and fun activities in the snow. **Includes:** 3 full-days of lessons and supervised lunch. For all ability levels.

| DATE | AVAILABILITY | PRICE |
|------------------|----------------------|-------|
| December 21-23 | Daily: 10am - 3:30pm | \$399 |
| December 29-31 | Daily: 10am - 3:30pm | \$399 |
| January 1-3 | Daily: 10am - 3:30pm | \$399 |
| February 13-15 | Daily: 10am - 3:30pm | \$399 |
| March 17-19 | Daily: 10am - 3:30pm | \$399 |
| March 24-26 | Daily: 10am - 3:30pm | \$399 |
| March 31-April 2 | Daily: 10am - 3:30pm | \$399 |

PARK CAMP (AGES 7-12, LEVEL 3+)

Looking to hone your skills in the park? Let our pros teach you the basics of jumping and safe landings in a friendly and fun atmosphere. **Includes:** Two full-days of lessons and supervised lunch. Participants must be Ability Level 3+.

| DATES | AVAILABILITY | PRICE |
|----------------|----------------------|-------|
| December 27-28 | Daily: 10am - 3:30pm | \$289 |
| February 14-15 | Daily: 10am - 3:30pm | \$289 |

FREERIDE (AGES 7-12)

10-week program: The Freeride Program promotes the development of all mountain skiing and riding by combining elements of freestyle, race and general improvement strategies. Every Saturday or Sunday your child will be grouped with the same instructor to allow for awesome skill progression and tons of fun. Lunch is supervised and can be purchased as an additional option.

ADD-ONS: Lunch **\$129**; Seasonal Rentals **\$184**

| START DATE | AVAILABILITY | PRICE |
|------------------------|---------------|-----------------------------------|
| January 10 (Saturdays) | 10am - 3:30pm | \$729 (early*) \$829 (regular) |
| January 11 (Sundays) | 10am - 3:30pm | \$729 (early*) \$829 (regular) |

ADD ONS!

ADD rentals to any camp for \$30/day!

ADD a lift ticket to a camp or any lesson for \$30/day. (7-12 Yrs)

*excludes seasonal programs



Book a second camp for the same child and save \$50! **Must be booked at the same time. Book over the phone or in person to receive discount.

VI RIDERS (SNOWBOARD ONLY, AGES 7-12, LEVEL 3+)

10-week program: VI Riders is a freestyle development program for Snowboarders. The focus of our program is on learning new tricks and mastering the fundamentals of snowboarding. Riders will work on all-mountain skills and spend time learning tricks in the terrain park. Rider development is of a freestyle nature and training is in a fun, confidence-building atmosphere.

ADD-ONS: Lunch: 1 day/week **\$129**; 2 days/week **\$258**

| START DATE | AVAILABILITY | PRICE |
|---------------------------------------|---------------|-------------------------------------|
| January 10 (Saturdays) | 10am - 3:30pm | \$729 (early*) \$829 (regular) |
| January 10 & 11 (Saturdays & Sundays) | 10am - 3:30pm | \$1458 (early*) \$1658 (regular) |

ALPINE & NORDIC:

JOIN US FOR WOMEN'S WEEK!

NOW FROM SUNDAY TO FRIDAY

PRIZES | APRÈS SPECIALS | DEEP DISCOUNTS & MORE!

CELEBRATE INTERNATIONAL WOMENS DAY!

MARCH 8 - 13

Read more about Women's Week:
Page 23 Alpine | Page 47 Nordic

All female identifying individuals are welcome.








DAYCARE IS AVAILABLE FOR CHILDREN 18-MONTHS TO 5-YEARS OLD, 7-DAYS A WEEK!

*SEE PAGE 33 FOR DETAILS

For more information about Women's Week visit mountwashington.ca/womens-week

YOUTH LESSONS (13-18)



MISSION AFFORDABILITY

BEGINNER LESSONS: FIRST TIME ONLY

DISCOVER SKIING & SNOWBOARDING

Welcome to the sport of Skiing and Snowboarding! This group lesson is designed for those who have never skied or snowboarded before. This "all inclusive" package includes a beginner lift ticket, rental equipment (eg. skis/board, boots, poles, and helmets) and a 2-hour beginner lesson.

| CATEGORY | AGES | AVAILABILITY | PRICE |
|----------|-------|-------------------|-------|
| Youth | 13-18 | Daily 10am or 1pm | \$124 |



Note: Youth & Adult categories are grouped together for these lessons.

NIGHT DISCOVER SKIING & SNOWBOARDING

Learn to Ski or Snowboard at night! This package includes a lift ticket, rental equipment (eg. Skis/snowboard, boots, poles, and helmet) and a 2-hour beginner lesson.

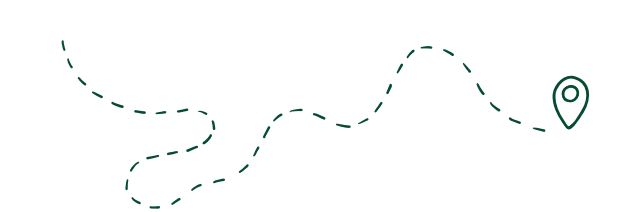
NEW LOW PRICE!

| CATEGORY | AGES | AVAILABILITY | PRICE |
|--------------------|-------|--|-------|
| Youth Night Lesson | 13-18 | 4pm on Thursdays, Saturdays & Christmas holidays | \$59 |

RETURN TRIP

A return package that provides a discounted rate after completion of the Discover Skiing/Snowboarding program. Includes an all-mountain lift pass, 2-hour lesson and rentals.

| CATEGORY | AGES | AVAILABILITY | PRICE |
|----------|-------|-------------------|-------|
| Youth | 13-18 | Daily 10am or 1pm | \$154 |



LEARN TO TURN

Mount Washington's Learn to Turn program is a combination of three of our most successful and popular programs to help you get out on the slopes faster and with more confidence. We have combined our Discover Skiing/Snowboarding package with an additional 2 group lessons, rentals, and two all mountain lift passes. You save up to 50% compared with paying separately!

| CATEGORY | AGES | AVAILABILITY | PRICE |
|----------|-------|-------------------|-------|
| Youth | 13-18 | Daily 10am or 1pm | \$349 |

Equipment deals available upon completion! See page 9.

SAVE UP TO 50%



YOUTH GROUP LESSONS & CAMPS

Group lessons are a great way to learn with others of similar ability. Classes are kept small and instructors are trained to deal with varying abilities so that the learning environment is kept fun and active. All group lessons are 2-hours in length.

ADD ONS!

- > ADD rentals to any lesson for \$45!
- > ADD a lift ticket to any lesson for \$45!
- > ADD high-performance rental for \$55!

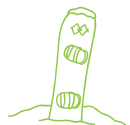
*Not applicable for seasonal programs; high performance rental pick up from Demo Centre

YOUTH (AGES 13-18)

| CATEGORY | AGE | AVAILABILITY | PRICE |
|---|-------|-------------------|-------|
| Ski Lessons <i>Levels 1-4</i> | 13-18 | Daily 10am or 1pm | \$89 |
| Snowboard Lessons <i>Levels 1-4</i> | 13-18 | Daily 10am or 1pm | \$89 |
| 5 Pack Group Lessons <i>(After purchase call our sales team to book individual lessons)</i> | 13-18 | Daily 10am or 1pm | \$354 |



PARK CAMP (YOUTH 13-18)



Looking to hone your skills in the park? Let our pros teach you the basics of jumping and safe landings in a friendly and fun atmosphere. **Includes:** Two full-days of lessons and supervised lunch. Participants must be Ability Level 3+.



| DATES | AVAILABILITY | PRICE |
|----------------|----------------------|-------|
| December 27-28 | Daily: 10am – 3:30pm | \$289 |
| February 14-15 | Daily: 10am – 3:30pm | \$289 |

Book a second camp for the same youth and save \$50!

****Must be booked at the same time. Book over the phone or in person to receive discount.**

> NEW! SKI & RIDE PARK CLUB (YOUTH 13-18)

5-week program: Join our Youth Ski & Ride Terrain Park Club—perfect for riders Level 3 and up who are looking to step up their skills with weekly progression in a non-competitive way! Learn new tricks and join a group of park skiers and snowboarders. Be prepared to hike sections of the park as you session features, progress your style, and build confidence. To top it all off, each session includes a slice of pizza and a pop.



SHUTTLE BUS: Single Trip **\$20**
To and from the Comox Valley!
****Subject to availability.**

VIEW THE BUS SCHEDULE: >



YOUTH SPECIALTY PROGRAMS

YOUTH FREERIDE

10-week program: The Freeride Program promotes the development of all-mountain skiing and riding by combining elements of freestyle, race and general improvement strategies. Every Saturday or Sunday your child will be grouped with the same instructor to allow for awesome skill progression and tons of fun. Lunch is supervised and can be purchased as an additional option.

AGES 13-18

| START DATE | AVAILABILITY | PRICE |
|------------------------|---------------|-----------------------------------|
| January 10 (Saturdays) | 10am – 3:30pm | \$729 (early*) \$829 (regular) |
| January 11 (Sundays) | 10am – 3:30pm | \$729 (early*) \$829 (regular) |

ADD-ONS: Lunch **\$129** • Seasonal Rentals **\$304**

Note: Classes are not offered over the Family Day Weekend



*Early bird pricing ends December 1st for Freeride and VI Riders.

YOUTH VI RIDERS (SNOWBOARD ONLY, AGES 13-18, LEVEL 3+)

10-week program: VI Riders is a freestyle development program for snowboarders. The focus is on learning new tricks and mastering the fundamentals of snowboarding. Riders will work on all-mountain skills and spend time learning tricks in the terrain park. Rider development is of a freestyle nature and training is in a fun, confidence-building atmosphere. Riders must be Ability Level 3+.

AGES 13-18

| START DATE | AVAILABILITY | PRICE |
|-------------------------------------|---------------|-------------------------------------|
| January 10 (Saturdays) | 10am – 3:30pm | \$729 (early*) \$829 (regular) |
| January 10-11 (Saturdays & Sundays) | 10am – 3:30pm | \$1458 (early*) \$1658 (regular) |

ADD-ONS: Lunch: 1 day/week **\$129**; 2 days/week **\$258**

Note: Classes are not offered over the Family Day Weekend



PRIVATE LESSONS

Private Lessons are the best way to improve your skiing and snowboarding technique. Whether you are looking to take your skiing or riding to the next level or you just want to fine-tune your turns, then consider taking a private lesson with one of our expert instructors. As a bonus you get lift line priority, which means more time on the snow and less in the line up.

| LENGTH | AVAILABILITY | PRICE | PRICE/ADDITIONAL PERSON |
|---|--|--------|--|
| Early Bird Private 1-Hour (Max 3ppl) | 9am only <i>*Cannot be combined with another private lesson</i> | \$104 | \$30 |
| 1-Hour Private (Max 3 ppl) | Daily based on availability. | \$134 | \$30 |
| 2-Hour Private (Max 3 ppl) | Daily 9am, 10am, 11am, 1pm | \$244 | \$40 |
| 3-Hour Private (Max 3 ppl) | Daily 9am, 10am, 11am | \$324 | \$50 |
| Full Day Private (5.5-Hours - Max 5 ppl) | Daily 9am | \$544 | No additional cost |
| 1-Hour Sunset Private (Max 3ppl) | 4pm Thursday - Saturday and Christmas Holidays | \$91 | \$30 |
| 5 Pack 1-Hour Private Lessons (Max 3 ppl) | Daily 9am, 10am, 11am, 1pm | \$614 | \$30 <i>*Per person and per lesson</i> |
| 5 Pack 2-Hour private lessons (Max 3 ppl) | Daily 9am, 10am, 11am, 1pm | \$1069 | \$40 <i>*Per person and per lesson</i> |
| Mini Tot Private Lesson Package | Daily 9am, 10am, 11am, 1pm <i>*Includes rentals & a 1hr private lesson: 2-3 yr olds skiing, 2-4 snowboard</i> | \$74 | n/a |
| 2-Hour Sunset Private Lesson (Max 5 ppl) | 4pm when Night Skiing is open | \$164 | No additional cost |



**Additional time slots may be available. Please inquire with our Sales Team. In all Private Lessons there is a maximum of 2 tots under 6 years old. All students in the same private lesson must be doing the same sport and be at the same level.*



Unsure of you, or your child's, ability level? Check out our Ability Levels guide on pages 6-7.

Reservations for private lessons are required. Please call 250-338-1386 ext. 384 to speak with a lesson specialist.

FAMILY BEGINNER LESSONS: FIRST TIME ONLY

FAMILY DISCOVER SKIING & SNOWBOARDING (AGES 7+)

Welcome to the sport of Skiing and Snowboarding! This group lesson is designed for families who have never skied or snowboarded before. Perfect for first-timers, this family lesson includes an Easy Acres lift ticket, 4 RFID cards**, rental equipment (skis or snowboard, boots, poles, helmets), and a 2-hour beginner lesson for up to 6 people.

| CATEGORY | AGES | AVAILABILITY | PRICE |
|-----------------------|------|---|-------|
| Family (max 6 people) | 7+ | Daily 10am or 1pm | \$449 |
| Family Night | 7+ | 4pm Thursdays, Saturdays & Christmas Holidays | \$199 |

**Children must be 7yrs or older to take part in any of these family lessons, for children under 7yrs please book a separate tots discover lesson.*

***Additional RFID card charges apply to family groups larger than four.*

FAMILY RETURN TRIP (AGES 7+)

A return trip for your family that provides a discounted rate after completion of the Discover Skiing & Snowboarding Lesson. Includes: All-mountain lift pass, 2 hour lesson, and rentals for up to 6 people.

| CATEGORY | AGES | AVAILABILITY | PRICE |
|-----------------------|------|-------------------|-------|
| Family (max 6 people) | 7+ | Daily 10am or 1pm | \$539 |

***RFID Cards are an additional fee, you can keep and re-use your card from the Discover lesson.*

NEW! GPS COMING THIS WINTER SEASON FOR ALL KIDS LESSONS:

Peace of mind on every run.

GPS tracking for kids. Designed for skiing. Built for parents.

GET IT ON Google Play

Download on the App Store

Scan to learn more

SAVE UP TO 50%



FAMILY LEARN TO TURN (AGES 7+)

A 3-lesson beginner package just for your family (up to 6 people). Includes our Discover Skiing/Snowboarding lesson plus two more half-day lessons, rentals, all-mountain lift passes for up to 6, and 4 RFID cards** — everything you need to get on the slopes faster and with confidence. You save up to 50% compared with paying separately!

| CATEGORY | AGES | AVAILABILITY | PRICE |
|-----------------------|------|-------------------|--------|
| Family (max 6 people) | 7+ | Daily 10am or 1pm | \$1029 |

Equipment deals available upon completion! See page 9.



BEGINNER LESSONS: FIRST TIME ONLY

DISCOVER SKIING & SNOWBOARDING

Welcome to the sport of Skiing and Snowboarding! This group lesson is designed for those who have never skied or snowboarded before. This “all inclusive” package includes a beginner lift ticket, rental equipment (eg. skis/board, boots, poles, and helmets) needed and a 2-hour beginner lesson. Get ready for your new favourite hobby!

| CATEGORY | AGES | AVAILABILITY | PRICE |
|----------|------|-------------------|-------|
| Adult | 19+ | Daily 10am or 1pm | \$124 |

NIGHT DISCOVER SKIING & SNOWBOARDING

Learn to Ski or Snowboard at night! This package includes a beginner lift ticket, rental equipment (eg. skis/snowboard, boots, poles, and helmet) and a 2-hour beginner lesson.

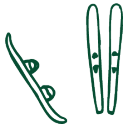
NEW LOW PRICE!

| CATEGORY | AGES | AVAILABILITY | PRICE |
|--------------------|------|---|-------|
| Adult Night Lesson | 19+ | 4pm Thursdays, Saturdays & Christmas Holidays | \$59 |

RETURN TRIP

A return package that provides a discounted rate after completion of the Discover Skiing/Snowboarding program. Includes an all-mountain lift pass, 2-hour lesson and rentals.

| CATEGORY | AGES | AVAILABILITY | PRICE |
|----------|------|-------------------|-------|
| Adult | 19+ | Daily 10am or 1pm | \$154 |



LEARN TO TURN

Mount Washington's Learn to Turn program is a combination of three of our most successful and popular programs to help you get out on the slopes faster and with more confidence. We have combined our Discover Skiing/Snowboarding package with an additional two group lessons, rentals, and two all mountain lift passes. You save up to 50% compared with paying separately!

| CATEGORY | AGES | AVAILABILITY | PRICE |
|----------|------|-------------------|-------|
| Adult | 19+ | Daily 10am or 1pm | \$349 |

Equipment deals available upon completion! See page 9.

ADULT GROUP LESSONS

Group lessons are a great way to learn with others of similar ability. Classes are kept small and instructors are trained to deal with varying abilities so that the learning environment is kept fun and active. All group lessons are 2-hours in length.

ADD ONS!

- > ADD rentals to any lesson for \$45!
- > ADD a lift ticket to any lesson for \$45!
- > ADD high-performance rental for \$55!

*Not applicable for seasonal programs; high performance rental pick up from Demo Centre.

ADULT (AGES 19+)

| CATEGORY | AGE | AVAILABILITY | PRICE |
|---|-----|-------------------|-------|
| Ski Lessons <i>Levels 1 -4</i> | 19+ | Daily 10am or 1pm | \$89 |
| Snowboard Lessons <i>Levels 1-4</i> | 19+ | Daily 10am or 1pm | \$89 |
| 5 Pack Group Lessons <i>(After purchase call our sales team to book individual lessons)</i> | 19+ | Daily 10am or 1pm | \$354 |



PARK CAMP



Looking to hone your skills in the park? Let our pros teach you the basics of jumping and safe landings in a friendly and fun atmosphere. **Includes:** Two full-days of lessons and lunch. Participants must be Ability Level 3+.

| DATES | AVAILABILITY | PRICE |
|----------------|----------------------|-------|
| December 27-28 | Daily: 10am – 3:30pm | \$349 |
| February 12-15 | Daily: 10am – 3:30pm | \$349 |



Reservations are strongly encouraged. Please go to mountwashington.ca to book, or call 250-338-1386 ext. 384 to speak with a lesson specialist.



ADULT

ADULT CAMPS & SPECIALTY PROGRAMS



> NEW! MASTER THE MOUNTAIN (19+)

5-week program: This Friday program is designed for skiers and snowboarders to build confidence, improve technique, and help you explore more of the mountain—at your own pace and in great company. Supportive instructors and a social vibe make every session both fun and rewarding.

| START DATE | AVAILABILITY | PRICE |
|-----------------------|--------------|-------|
| January 16 (Fridays) | 9am – 12pm | \$319 |
| February 20 (Fridays) | 9am – 12pm | \$319 |

ADD-ONS: Seasonal Rentals **\$304**

Coffee break with your instructor in the Snow School area is included! Lounge with the pros and talk snow.



> NEW! SKI & RIDE LAB (19+)



5-week program: Level up your skiing or snowboarding with our progression-based program designed to sharpen skills, build confidence, and elevate your on-mountain performance—all while connecting with like-minded riders in a supportive setting.

| START DATE | AVAILABILITY | PRICE |
|-----------------------|--------------|-------|
| January 11 (Sundays) | 9am – 12pm | \$319 |
| February 22 (Sundays) | 9am – 12pm | \$319 |

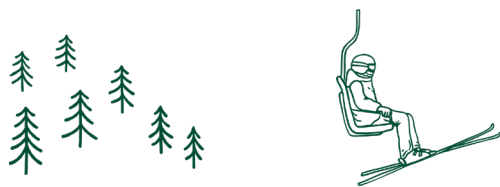
ADD-ONS: Seasonal Rentals **\$304**



> NEW! CARVE DIEM 2-DAY CAMP (19+)

Seize the day, seize the snow! Carve Diem is a NEW 2 day on-snow progression camp for adults level 3 and higher who want to dial in their carving skills and have a ridiculous amount of fun doing it, includes a lunch from our F&B team.

| DATES | AVAILABILITY | PRICE |
|--------------|---------------|-------|
| February 3-4 | 10am - 3:30pm | \$349 |



Reservations are strongly encouraged. Please go to mountwashington.ca to book, or call **250-338-1386 ext. 384** to speak with a lesson specialist.

MARCH WOMEN'S WEEK (19+) NOW FROM SUNDAY TO FRIDAY!

Enjoy our Women's Week packages and special après all week long. A "Women Only" program taught and designed especially for woN. Participants of similar abilities are grouped into classes to meet new friends and re-visit old ones as you improve your skiing and riding technique. Womens Week participants will be entered for daily prize draws, and a grand prize presented by Helly Hansen. Alpine Women's Week includes a 2-hour women's only lesson from 10am - 12pm, and a delicious lunch from our F&B Crew. *All female identifying individuals are welcome.*

*Daycare discounts are available, contact our Snow School team for details.

| DATES | AVAILABILITY | PRICE |
|------------|--|-------|
| March 8-13 | Lesson: 10am – 12pm Lunch: 12pm – 1pm | \$99 |



Celebrate International Women's Day! Sunday, March 8th kicks off Women's Week

ADD ONS!

- > ADD rentals to any lesson for \$45!
- > ADD a lift ticket to any lesson for \$45!
- > ADD high-performance rental for \$55!

*Not applicable for seasonal programs; high performance rental pick up from Demo Centre

GO FOR ANOTHER LAP. MOM & DAD! I'M HAVING FUN HERE IN THE BEARS DEN.

DAYCARE IS AVAILABLE FOR CHILDREN 18-MONTHS TO 5-YEARS OLD, 7-DAYS A WEEK!

*SEE PAGE 33 FOR DETAILS



BEGINNER SKI & SNOWBOARD PACKAGES FOR JUST \$29.95

Never Ever Days is the ultimate beginners' package for anyone ages 7+ who has ever considered trying skiing or snowboarding, providing everything you need: equipment rental, beginner lift ticket, and a lesson, all for just \$29.95 (+tax).

Available every Friday throughout the winter season beginning Dec. 26. Lessons run 4pm - 6pm. Bookings required.

Book online via Canadian Ski Council > GoSkiingGoSnowboarding.ca



ADULT



FREE 2026 DEMO EVENTS!

JAN 17TH | FEB 7TH | MARCH 7TH

FREE DEMOS FOR ALL GUESTS: JUST BRING BOOTS

PASS HOLDERS,
REMEMBER TO USE
YOUR EXCLUSIVE
DEMO CENTRE
DISCOUNT PERKS!

WITH YOUR GOLD SEASON
PASS YOU GET 15% OFF
TUNING SERVICES
&
20% OFF GEAR DEMOS
ALL SEASON LONG!



ENJOY
EXCLUSIVE
GOLD PASS
PERKS!

See more about pass
perks on page 34.



HIGH PERFORMANCE GEAR | RENTALS, DEMOS & SALES | TUNING SERVICES

mountwashington.ca/demo-centre

RENTALS

ROSSIGNOL EXPERIENCE CENTRE

The Rossignol Experience Centre carries the latest in Rossignol technologies. Built with skill progression in mind, the equipment is ideal for novice and intermediate riders.

ONE-DAY RENTAL PACKAGE

| CATEGORY | DAY PRICE | NIGHT PRICE |
|--------------------------|-----------|-------------|
| Adult/Youth/Senior (13+) | \$59 | \$30 |
| Child/Tot (12 & under)* | \$39 | \$18 |

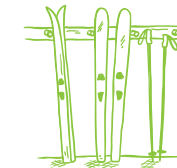
Packages include boots, skis and poles, or snowboard.

ADD-ONS: Adult helmet rental: Day **\$18**; Night: **\$11**

*Child/Tot rental packages include a helmet.

UPGRADE:

- Try out high performance ski or snowboard rentals from The Demo Centre for \$69
- ADD boots for \$10!



SEASONAL RENTALS

| CATEGORY | PRICE |
|--------------------------|-------|
| Adult/Youth/Senior (13+) | \$334 |
| Child/Tot (12 & under) | \$224 |

- A \$100 deposit will be taken at either the time of purchase or at the time of equipment pickup. This deposit will be refunded when all the equipment is returned before the end of the season.
- If the seasonal equipment is returned before closing day and the pass-holder wishes to ski additional days in the season, daily rentals can be arranged.
- Helmets are not included with the seasonal rental. Outdoor Elements carries a wide variety of helmets to purchase.
- Seasonal rentals are limited. Please book early to ensure availability.



STARTER PACKAGE DEALS

Rossignol Ski or Snowboard Gear Packages to get your snow-bum journey going:



Save **30% off** when purchasing the complete package and enjoy the freedom of owning your gear!

SKI PACKAGE (valued at \$920)

Experience 76 Skis with
Xpress 10 bindings
\$579.95

Evo 70 Boots
\$279.95

Tactic Poles
\$59.95

SNOWBOARD PACKAGE (valued at \$880)

Evader Board
\$419.95

Crank Laced Boots
\$249.95

Battle Bindings
\$209.95



RENTALS

❄ Winter 2025/26 ❄

❄ Vancouver Island, BC ❄

❄ 888-231-1499 ❄

❄ @mountwashington ❄

❄ www.mountwashington.ca ❄

❄ 25 ❄

GEAR SERVICES & TUNING

ROSSIGNOL DEMO CENTRE

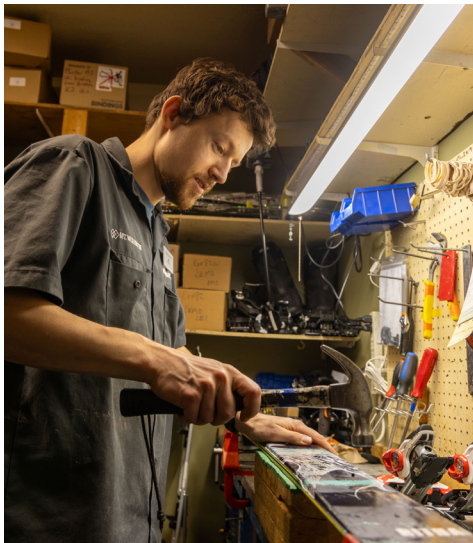
The Demo Centre is a full-service shop that can fix up your ride and help you glide for a superior skiing or boarding experience.

SKI AND SNOWBOARD SERVICES

MISSION AFFORDABILITY

| SERVICE | PRICE |
|---|-------|
| Basic Tune (grind, sharpen, roller wax) | \$65 |
| Premium Tune (minor scratch repair, grind, sharpen, hand wax) | \$75 |
| Hand Wax (iron used for deeper penetration of the wax) | \$32 |
| Roller Wax (Winterstieger wax machine with hot wax application wheel and buffing wheel) | \$19 |
| Binding Mount (Included with purchase of binding from our store locations) | \$55 |
| Sharpen & Hot Wax | \$55 |
| Binding Remount | \$59 |
| Edge Sharpen | \$25 |

Please note: Drop-ins welcome but services may take up to 48 hours based on volume or request.



CUSTOM BOOT FITTING

Featuring BootDoc insoles and the latest in boot-shaping technologies. If you get cold feet, numbness in your toes, or if your ski boots just hurt your feet, we have the techniques and tools to help your feet feel better. Featuring BootDoc insoles, Hotronic heated socks, and heated insoles.

We start by assessing your feet with our BootDoc Podiscope machine to determine how much support your foot requires inside your boot. Then we can move on to either a trim to fit semi-customizable foot bed or a fully custom insole that cradles your foot and makes a long day on snow not feel so long.

| SERVICE | PRICE |
|------------------------|-------|
| Custom Fit Assessment | \$59 |
| Footbeds | \$65+ |
| Boot Stretch Per Punch | \$49 |
| Boot Liner Heat Fit | \$39 |

NEW
Customizeable
DIY tuning kits from
basic waxing tools
to race tunes!

DEMOS & HIGH PERFORMANCE RENTALS



HIGH PERFORMANCE SKIS & BOARDS

The Rossignol Demo Centre carries the latest skis and boards from Rossignol, perfectly suited for all conditions on the mountain. Whether it be a deep powder day, an all-mountain freeride day, or carving up the freshly groomed trails. Whatever your mood, the Demo Centre has the skis or board for you.

| CATEGORY | PRICE |
|--------------------------|-------|
| Full-Day Demo Rental | \$69 |
| Boot Rental Only | \$49 |
| ADD ON Boots to Full-Day | \$10 |



An aerial photograph of a winter resort on a snow-covered mountain. The image shows several ski runs with groomed tracks and ski lift poles. A cluster of chalets and resort buildings is situated in the middle-right section, surrounded by dense evergreen trees. A winding river or stream flows through the lower part of the image. The sky is clear and blue.

Elevate your everyday, *here.*
Vancouver Island's Coastal Playground

2025/26 EVENT HIGHLIGHTS:

- **NOVEMBER 28-29 | WINTER STOKEFEST**
COMMUNITY EVENTS IN DOWNTOWN COURTENAY
- > **DECEMBER 12-14 | OPENING WEEKEND!**
SEASON OPENER 1979 PARTY IN TED'S BAR
- **NIGHT SKIING | DECEMBER 18-JANUARY 3**
DAILY HOLIDAYS & THURS TO SAT UNTIL MARCH 28
- **DECEMBER 19-JANUARY 3 | HOLIDAY EVENTS**
 - FAMILY FUN CELEBRATIONS & ACTIVITIES
 - FESTIVE FONDUE AT RAVEN LODGE
 - BOXING DAY TORCHLIGHT & FIREWORKS
 - NYE PARTY CELEBRATIONS & 9PM FIREWORKS
- > **SATURDAY, JANUARY 17**
AVALANCHE AWARENESS DAY
NORDIC LANTERN SKI & NIGHT RACE
- > **JANUARY 24-25 WEEKEND**
WINTER CARNIVAL EVENTS
- **FEBRUARY 6-22**
VARIOUS OLYMPIC EVENTS & VIEWINGS
- > **MONDAY, FEBRUARY 16**
FAMILY DAY EVENTS
- **WEEK OF FEBRUARY 23-28**
LUNAR NEW YEAR SPECIALS
- > **SUNDAY, MARCH 1**
VISAS ADAPTIVE AWARENESS DAY
- **SATURDAY, MARCH 7**
2SLGBTQ+ PRIDE EVENTS IN THE MOUNTAINS
- **SPRING BREAK MARCH 16-30**
FRIDAY NIGHT RAIL JAMS & SKI WEEK DEALS
• MARCH 27 AFTERDARK BIG AIR INVITATIONAL
- > **MARCH 21-22 WEEKEND**
NORDIC FEST & VI LOPPET AT RAVEN LODGE
- **APRIL 2-5 WEEKEND**
TIMBER TOUR FREESTYLE BC EVENTS
EASTER WEEKEND FESTIVITIES
- > **CLOSING WEEKEND FESTIVITIES**
 - APRIL 11 | TAILGATE CAMPOUT & DUMMY DOWNHILL
 - APRIL 12 | SLUSH CUP & CLOSING DAY
- > **APRIL-MAY | COMMUNITY EVENTS**
 - APRIL 26 | SNOW TO SURF ADVENTURE RACE
 - MAY 1 | WEST COAST TRIPLE PLANK



DRESS UP THEME DAYS:

- JANUARY 31 | SNOWDEO WESTERN DAY
- FEBRUARY 21 | OLYMPIC HERO DRESS UP
- MARCH 14 | RETRO VINTAGE THEME DAY
- APRIL 4 | TROPICAL BEACH THEME DAY

COMEDY NIGHTS - AT RAVEN LODGE!

- JANUARY 31 | DINNER & A SHOW
- FEBRUARY 14 | VALENTINES EDITION!
- MARCH 7 | 2SLGBTQ+ PRIDE EDITION!
- MARCH 21 | DINNER & A SHOW

WEEKLY IN TEDS STARTING JANUARY:

- THURSDAY NIGHT MUSIC BINGO
- FAMILY FRIDAY NIGHT SKI SPECIALS
- SATURDAY NIGHT DJ PARTY
- SUNDAY NIGHT KARAOKE

For details & the full list of events, visit mountwashington.ca/events

CAMP & PROGRAM HIGHLIGHTS:

- > **CANADIAN SKI COUNCIL NEVER EVER DAYS**
 - BEGINS DECEMBER 26 | FRIDAYS UNTIL MARCH 27
- > **LEARN TO SKI & SNOWBOARD FREE!**
 - DECEMBER 12-19 | DISCOVERY DAYS AGES 13+
 - DECEMBER 20 | DISCOVERY DAYS AGES 7-12
 - FEBRUARY 16 | SPECIAL FAMILY DAY EDITION!
 - MARCH 30 - APRIL 5 | DISCOVERY DAYS AGES 13+
 - APRIL 3 | DISCOVERY DAYS AGES 7-12
- > **MOUNTAIN KIDS CAMPS**
 - DECEMBER 21-23 | HOLIDAY MTN KIDS CAMP
 - DECEMBER 29-31 | HOLIDAY MTN KIDS CAMP
 - JANUARY 1-3 | HOLIDAY MTN KIDS CAMP
 - FEBRUARY 13-15 | FAMILY DAY MTN KIDS CAMP
 - MARCH 17-19 | SPRING MTN KIDS CAMP
 - MARCH 24-26 | SPRING MTN KIDS CAMP
 - MARCH 31 - APRIL 2 | SPRING MTN KIDS CAMP
- > **PARK CAMPS**
 - DECEMBER 27-28 | HOLIDAYS PARK CAMP
 - FEBRUARY 14-15 | FAMILY WEEKEND PARK CAMP
- > **JANUARY 10-11:**
 - FREERIDE PROGRAM STARTS (10 WEEKS)
 - MIGHTY TOTS PROGRAM STARTS (5 WEEKS)
 - LITTLE TOTS PROGRAM STARTS (5 WEEKS)
 - TINY TOTS PROGRAM STARTS (5 WEEKS)
 - SKI & RIDE LAB STARTS (5 WEEKS)
- > **JANUARY 15-16:**
 - YOUTH SKI & RIDE CLUB STARTS (5 WEEKS)
 - MASTER THE MOUNTAIN STARTS (5 WEEKS)
- > **NEW! 2-DAY CARVE CAMP: FEBRUARY 3-4**
SEIZE THE DAY, SEIZE THE SNOW! PROGRESSION CAMP FOR 19+ FOR SKIERS & SNOWBOARDERS WHO LIKE TO HAVE FUN AND PROGRESS THEIR SKILLS.
- > **FEBRUARY 19-22:**
 - FREERIDE PROGRAM CONTINUES
 - MIGHTY TOTS PROGRAM STARTS (5 WEEKS)
 - LITTLE TOTS PROGRAM STARTS (5 WEEKS)
 - TINY TOTS PROGRAM STARTS (5 WEEKS)
 - SKI & RIDE LAB STARTS (5 WEEKS)
 - MASTER THE MOUNTAIN STARTS (5 WEEKS)
 - YOUTH SKI & RIDE CLUB STARTS (5 WEEKS)
- > **WOMEN'S WEEK: MARCH 8-13**
NOW STARTING ON SUNDAY, MARCH 8TH IN CELEBRATION OF INTERNATIONAL WOMEN'S DAY
- > **PARK JAM MARCH 21**
VI RIDERS COAST CLUB EVENT

For full details on special programs visit mountwashington.ca/programs

BRING YOUR CLASSROOM TO ENJOY MOUNT WASHINGTON!



**WIN A TRIP
FOR YOUR CLASS TO
ALPINE OR NORDIC!**

**FOR DETAILS
& ENTRY FORM VISIT:
[mountwashington.ca/
school-groups](http://mountwashington.ca/school-groups)**

**Contest valid for local SD 71
& 72 classes only**

School Group Experiences

Slide into learning, laughter, and fresh mountain air with exciting winter offerings for your class.

➤ **Coming this Season:** GPS trackers are provided to all students! See page 19 for details on *skiKrumb* trackers.

This season we have expanded to 3 options!

NEW! FULL DAY ALPINE SESSION PACKAGE:

- Alpine Skiing & Snowboarding:** \$99 for a full day lesson*, full day lift ticket, and equipment rentals
- Step beyond traditional lessons with a full day of fun, skill-building, and mountain adventure in a safe, supportive environment for your class.
 - Students ski or ride with a dedicated instructor all day, receiving personalized, next-level instruction. Mornings focus on developing skills; afternoons offer guided supervision to apply those skills while exploring the mountain.
 - Did you know you can personalize higher-level groups to focus on the terrain park or introductions to becoming instructors themselves?! Based on availability.

TRADITIONAL ALPINE EDUCATIONAL GROUPS PROGRAM:

Alpine Skiing & Snowboarding: \$89 for a 1.5-hour lesson*, lift ticket, and equipment rentals

LOCAL SCHOOLS! SD71 & 72 IN COURTENAY & CAMPBELL RIVER:

- We continue offering our local schools trips to Mount Washington for as little as \$29* per person at Nordic and \$39* at Alpine. These highly discounted packages are designed for our local schools so they fit within the school day!
- Bus options are available as an extra add on within the Comox Valley for \$650 return trip, or meeting at the base of Mt. Washington for \$325. Our bus capacity is 48 riders.
 - For the kids and kids at heart... We offer complimentary Chaperone Tickets: 1 per 10 students.

*Lessons are now mandatory for all educational school groups.

Visit mountwashington.ca/school-groups and fill out the Contact Form to receive more information on bringing your classroom out onto the snow!

BEAR'S DEN DAYCARE

The Bear's Den Daycare is a supervised indoor playtime for tots aged 18-months to 5-years-old. Our daycare staff create a fun and safe environment for your tots with games, toys and crafts, in our licensed facility.

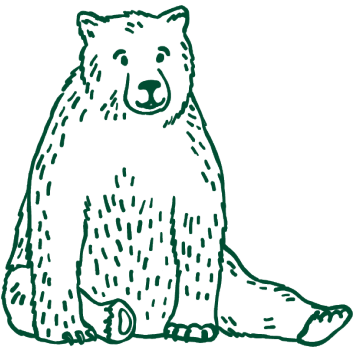
Full-day program includes options such as lunch, beverages, and snacks. Half-day programs include snacks and beverages. Please register your child for daycare prior to your vacation to ensure availability.

The Bear's Den Daycare is a licensed occasional child care facility open 7-days a week from 8:30am to 3:30pm and is located on the lower floor of the Rossignol Experience Centre.

| LENGTH | AGE | TIMES (7 DAYS A WEEK) | PRICE |
|----------|---------------------|---------------------------------|-------|
| Half Day | 18–36 months | 8:30am – 12pm or 12:30 – 3:30pm | \$76 |
| Full Day | 18–36 months | 8:30am – 3:30pm | \$86 |
| Half Day | 37 months – 5 years | 8:30am – 12pm or 12:30 – 3:30pm | \$56 |
| Full Day | 37 months – 5 years | 8:30am – 3:30pm | \$66 |

Please note: Children are only allowed to be in care for a maximum of four days per calendar month as per our Occasional Child Care Licence.

PARENTS
PARTICIPATING IN
CAMPS & SPECIALTY
PROGRAMS CAN
SAVE ON
DAYCARE!



Parents or guardians must present the following, as required for our Childcare License, which is issued by the Vancouver Island Health Authority:

- Proof of medical coverage (MSP number or travel insurance documents)
- Immunization history
- Emergency contact number
- A recent photo of your child for our records
- Doctor's name and phone number



SEASON PASS HOLDER PERKS

REAP MOUNTAINS OF BENEFITS WITH YOUR GOLD PASS PLUS UNLIMITED ALPINE & NORDIC ACCESS.

REFERENCE THIS STICKER IN THE GUIDE FOR GOLD PERKS!



WINTER ACTIVITIES & TICKETS

- * Free Night Skiing access all season
- * 1 FREE Tube Park ticket! Plus (4) additional 50% off Tube Park tickets. Tubing must be booked in advance.
- * 50% off single use daily Bus Transportation Tickets



SLOPESIDE ACCOMMODATIONS

- * Winter & Summer 15% off mid-week accommodations at time of booking.
- * Subject to availability, holiday blackout rates apply.



FOOD & BEVERAGE

- * 1x Buy One Get One 50% off Snowshoe Fondue (Must be booked by phone)



SNOW SCHOOL, RENTALS, & RETAIL

- * Enjoy up to SIX 50% (*) off buddy passes for your crew to enjoy. The earlier you purchase the more you can share and save!
- * **Purchase early and receive additional Buddy Passes:**
Six* (6) Buddy tickets between Mar. 17, 2025-Apr. 13, 2025
Four (4) Buddy tickets between Apr. 14, 2025 – Sept. 1, 2025
Two (2) Buddy tickets Sept. 2, 2025 – March, 2026.

A Child Pass cannot be used to redeem Youth, Adult or Senior Buddy Tickets. Senior and Youth are eligible to redeem Adult Buddy Tickets. Redeemed in person with Pass Holder present - day of skiing at any ticket window. Not available on already discounted tickets. Some restrictions apply, visit the ticket window for full details.

SNOW SCHOOL, RENTALS, & RETAIL

- * 15% off retail all locations
- * 50% off alpine adult afternoon PM Group lessons 13+ (All season long, must be booked in advance)
- * 15% off Rossignol demos all season long
- * 15% off services at demo center all season long



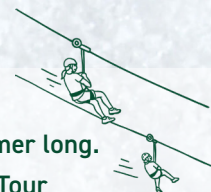
NORDIC CENTRE AT RAVEN LODGE

- * 50% off 2pm Nordic adult XC ski lessons.
- * 4x 50% snowshoe trail passes
Validation sticker required



SUMMER

- * Free scenic chair rides all summer long.
- * 1x buy one get one 50% off Zip Tour
- * 1x buy one get one 50% off Bike Rental



VISIT MOUNT WASHINGTON TOGETHER:
WHERE GROUPS GROW CLOSER!

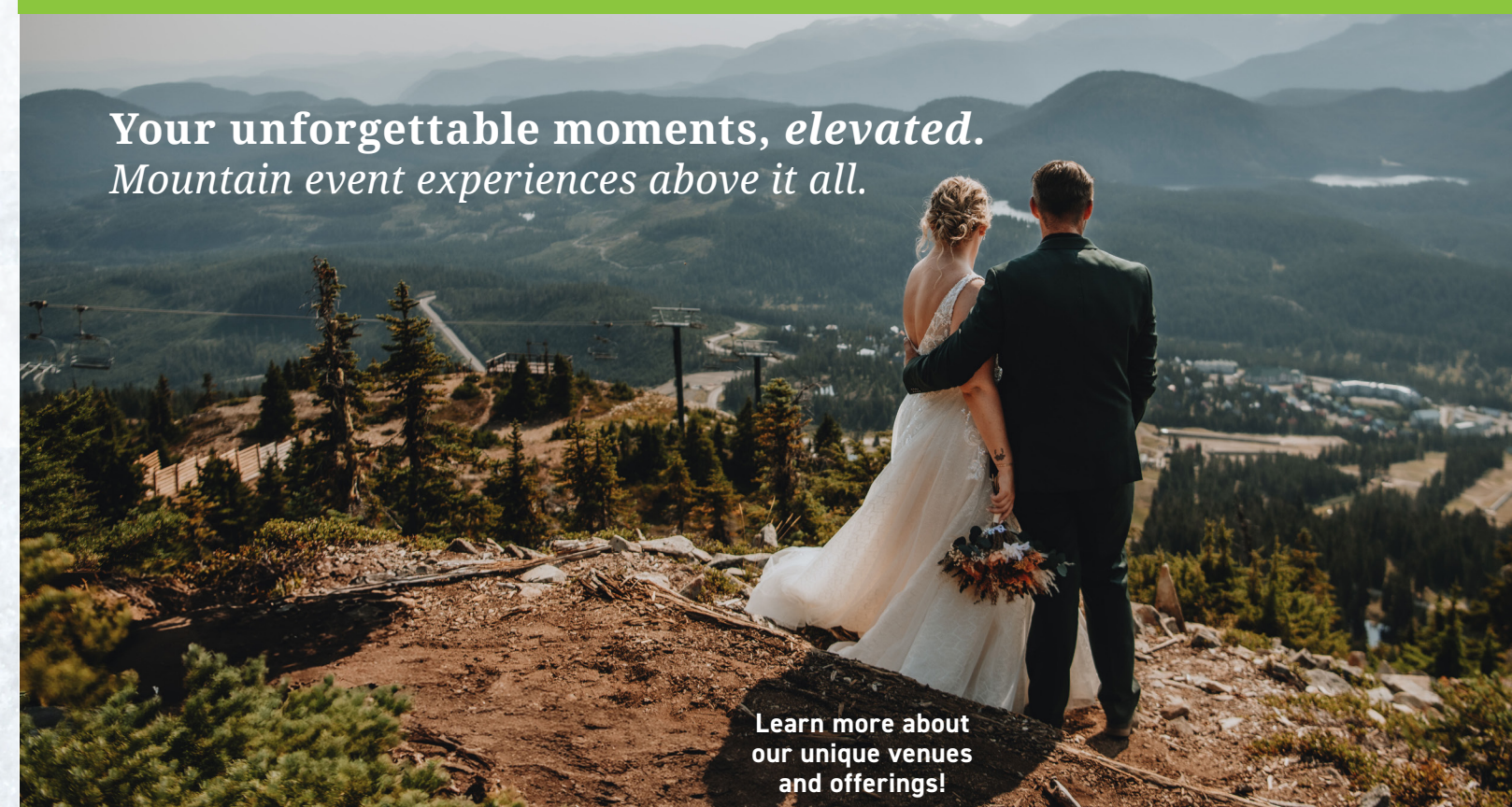
Bring your team, company, or community group to the mountains for an unforgettable outdoor experience!

From snowshoeing, alpine or Nordic skiing, and snowboarding in the winter, to biking and ziplining in the summer, we've got activities that bring people together to elevate experiences in the fresh mountain air.

Our Corporate & Groups Team is here to help you plan the perfect outing—whether it's team building, a new adventure or just a fun day on the slopes and trails. **Contact us today!**

For more information & to book your group adventure: mountwashington.ca/groups

Your unforgettable moments, *elevated.*
Mountain event experiences above it all.



Learn more about our unique venues and offerings!

For more information about your Pass Perks, please visit mountwashington.ca/xtras

WEDDINGS | CATERING | ACTIVITY DEALS | & MORE mountwashington.ca/weddings



A large, innovative ski shop, Outdoor Elements features outerwear, skis and snowboards from Rossignol. The shop also carries a large selection of lifestyle clothes, outerwear and gear from other popular brands like Burton, Helly Hansen, Smith, 686, Picture Organic, Outdoor Research and Bula. Plus, groceries, liquor and more conveniences for your visit.



RETAIL & GEAR SALES WINTER 2025/26

- December 26-31: Boxing Week Sale
- January 17: Mid-Winter Retail Sale
- February 13-16: Family Day Sale
- March 7: Retail & Demo Gear Sale

GEAR & APPAREL | GIFTS & SOUVENIERS | GENERAL STORE mountwashington.ca/shopping

SPIN, SLIDE & SWIRL AT THE TUBE PARK!

THE TUBE PARK

Get pumped up at The Tube Park! Whirl, slide and whoop-de-do, spin, smile and selfie. This is the most fun snow experience you can have, sans-ski, with your household this winter.

Open Thursday to Monday, 10am – 5pm.
Closed Tuesday/Wednesday.

| CATEGORY | PRICE |
|--------------------|-------|
| Youth/Adults (13+) | \$20 |
| Tots/Child (2-12) | \$15 |

ADD-ON: Add a second hour for \$10

Please note: Children must be 42" tall to ride on their own tube. Children under 42" tall may ride free of charge only when riding with a guardian. Tube Park operations are weather and conditions permitting.



For more details about The Tube Park, please visit mountwashington.ca/tubing

ENJOY SUMMER HERE!

EXPERIENCE THE PLAYGROUND OF OUR OTHER FAVOURITE SEASON.



For more information about summer activities and events visit mountwashington.ca/summer
LIFT ACCESSED BIKE PARK | ZIPTOURS | SCENIC CHAIR | HIKING | EVENTS & MORE!



MOUNTAIN BIKE LESSONS, CAMPS & MORE FUN!



ACTIVITIES, EVENTS, HIKING & SIGHTSEEING



NEW! BIKE ADVENTURE CAMP

For kids ages 7-12, these action-packed camps include mountain biking, trail building, basic bike mechanics, games, and more! Led by experienced camp leaders, riders will enjoy a week of fun and adventure in a safe, supportive environment. Mountain bike & armour gear rentals are available. *Runs 9am-4pm.*

Mark your calendar now for summer 2026 camp dates:

July 6 - 10 | July 13 - 17 | July 20 - 24 | July 27 - 31
August 3 - 7 | August 10 - 14 | August 17 - 21 | August 24 - 28

ALPINE ADVENTURE CAMPS

For kids ages 5-12, our camps are packed with hiking trips, a visit to the Marmot Recovery Centre, games, crafts, and more! Led by experienced camp leaders, adventurers will have an unforgettable week in a safe, supportive environment. *Runs 9am-4pm.*

Mark your calendar now for summer 2026 camp dates:

July 6 - 10 | August 3 - 7



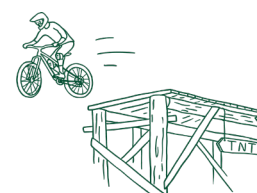
MIDWEEK CAMP ADD-ONS: Bus transport from Courtenay (8:30 am-5 pm) or Comox (8 am-4:30 pm).



4-WEEK FREERIDE SATURDAYS (Ages 7-12)

Join us for our multi-week mountain bike program every Saturday in August, running from 10am to 3pm. Ride alongside a dedicated instructor each week to enhance your skills and progress in a fun, supervised environment, all while gaining ample trail time.

For more information about summer visit mountwashington.ca/summer



ENTERTAINMENT EVENTS

- WASHY MOUNTAIN MUSIC FAIR
- HOLIDAY 2-FOR-1 SIGHTSEEING
- WASHY KIDS FESTIVAL
- FALL FESTIVAL & BERRY FAIR
- TRAIL RUNNING EVENTS
- FULL MOON CHAIRLIFT RIDES



MTN BIKE RACES & EVENTS

- MOUNT WASHY DOWNHILL RACES
- ISLAND CUP ENDURO RACE
- THURSDAY NIGHT RACE SERIES
- STEVIE SMITH MEMORIAL DOWNHILL RACE, VI BIKE FESTIVAL WEEKEND & MORE MTB COMMUNITY GOOD TIMES

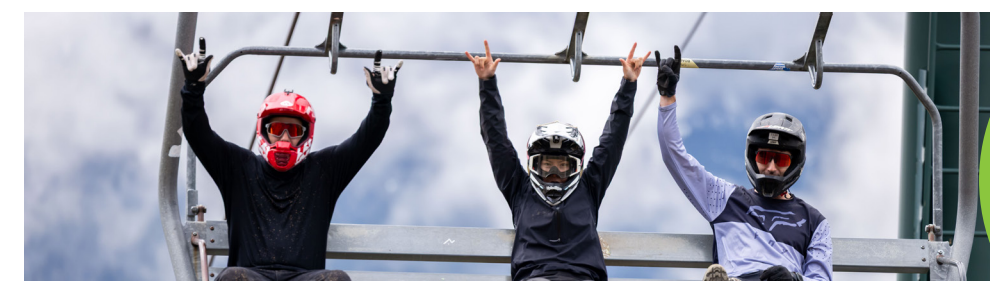
GET AMONGST SO MUCH MORE MOUNTAIN FUN & SUMMERTIME EVENTS WITH OUR CALENDAR!



For dates, details & the full list of events, visit mountwashington.ca/events

SUMMER SAVINGS!

- FAMILY FRIDAY NIGHTS! VISIT THE BIKE PARK & SCENIC CHAIR FROM 3:30-7:30PM STARTING AT JUST \$5
- DISCOUNTED MOUNTAIN BIKE TICKETS AND RENTAL PACKAGES ARE AVAILABLE ALL SEASON LONG
- GROUP DISCOUNTS FOR 10 OR MORE!*
- DAYCARE IS NOW AVAILABLE ON SATURDAYS AND SUNDAYS!
HALF-DAY, FULL-DAY AND 1-HOUR DROP-IN TIMESLOTS



INSTRUCTOR COURSES

PSIC INTRODUCTION TO INSTRUCTION DAYS

Mount Washington Snow School and the Professional Ski Instructors of Canada (PSIC) are offering a 3-hour introduction to ski instruction.

Spend 2.5 hours on-snow with a PSIC trainer, then join a 30-minute Q&A with our Snow School Leaders to explore the opportunities and rewards of teaching skiing.

Bonus:Receive a \$39 credit toward your Level 1 PSIC Instructor Certification.

| DATES | PRICE |
|-------------|-------|
| February 1 | \$39 |
| February 28 | \$39 |



| DATES | TIME | PRICE |
|----------------|-----------|-------|
| December 12-14 | 9am - 4pm | \$579 |
| January 2-4 | 9am - 4pm | \$579 |
| February 7-9 | 9am - 4pm | \$579 |
| March 14-16 | 9am - 4pm | \$579 |

Please note: *Level 1 certification is a prerequisite for employment with the Snow School. To book please visit **psic.pro**. For courses beyond the Level 1 please visit **psic.pro**. Prices are for the course only. Lift tickets can be purchased separately for 50% off of the day rate. Visit **psic.pro** to register

CASI SNOWBOARD INSTRUCTOR COURSE

CASI: Canadian Association of Snowboard Instructors

The Level 1 Instructor course is an introductory certification, aimed at giving new instructors some basic tools and training to teach beginner and novice snowboarding.

Pre Req: You must be 15 years of age on the first day of the course, fluent in English, and must demonstrate comfortable and safe riding skills on intermediate terrain.

Please visit **casi-acms.com** for course information and registration.

| DATES | TIME | PRICE |
|-------------|--------------|----------|
| Dec. 21-23 | 9am - 4:30pm | \$596.25 |
| Jan. 17-19 | 9am - 4:30pm | \$596.25 |
| Feb. 14-16 | 9am - 4:30pm | \$596.25 |
| March 17-19 | 9am - 4:30pm | \$596.25 |

CSIA, PSIC, CASI: PARK INSTRUCTOR COURSES

Love to jump, slide, or spin? Did you know you could become a Terrain Park ski or snowboard instructor.

Enhance your own riding while developing the teaching skills needed to safely introduce students to terrain park. Designed as an introductory step into the world of park instruction, successful candidates will gain the confidence and knowledge of the park progression in a fun and safe environment.



PSIC LEVEL 1 SKI INSTRUCTOR COURSES

PSIC: Professional Ski Instructors of Canada

Purpose of the Level 1 Program:

- Spark your interest and excitement through a fun and engaging introduction to ski teaching.
- Expose the purpose, potential and responsibility in the role of the ski instructor.
- Provide guidance for creating fun, safe, learning adventures for first-timers through green and easy blue run skiers with a primary focus on children.
- Provide you with basic concepts and practical tools to equip you for your first lessons in a snow school.

Duration:

- E-Learning Component — approximately 45 minutes to complete at home, at your own pace prior to the on snow component.
- On-Snow training is three-days, approximately 5 hours per-day.



INSTRUCTOR COURSES CONT'D



CSIA LEVEL 1 SKI INSTRUCTOR COURSES

CSIA: Canadian Ski Instructors Alliance

The CSIA Level 1 Course is designed to introduce and develop the basic skills for teaching new skiers of all ages with a focus on teaching children.

Time will be spent exploring: Collaborative Teaching Approaches and Lesson Planning, CSIA Technical Concepts, Ski Improvement, Guest Service and Communication Skills.

Candidates will receive coaching on their skiing, as well as feedback on their teaching skills, with the goal of reaching the Level 1 Standard in both areas. They will also receive suggestions and strategies for long-term development. The successful Candidate is certified to teach first-time skiers through Intermediate level students.

| DATES | TIME | PRICE |
|---------------------|-----------|-------|
| December 13, 14, 20 | 9am - 4pm | \$579 |
| January 17-19 | 9am - 4pm | \$579 |
| February 20-22 | 9am - 4pm | \$579 |
| March 24-26 | 9am - 4pm | \$579 |

Please note: *Level 1 certification is a prerequisite for employment with the Snow School

Prices are for the course only. Lift tickets can be purchased separately for **50%** off the day rate. To book please visit **www.snowpro.com**. For courses beyond the Level 1 please visit **snowpro.com** to view the full course schedule for Mount Washington. First day of course requires 8:30 am check in.



CANSI XC SKI INSTRUCTOR COURSES



| COURSE | DATES | PRICE |
|--------------|---------------------|-------|
| XC Refresher | TBA * contact CANSI | Free! |
| XC Level 1 | Feb 6 - 8, 2026* | \$500 |
| XC Level 2 | Feb 19 - 22, 2026* | \$650 |

www.cansi.ca

Please note: Prices are for the course only. Day passes can be purchased separately for 50% off the day rate. Visit **www.cansi.ca** to register. Both dates subject to change to accommodate participants.

XC Refresher: CANSI instructors who wish to maintain their professional certification must attend a refresher at least once every three-years. These 1-day courses allow instructors to perfect their ski analysis skills, improve their teaching methods and stay current in the evolution of telemark and cross-country ski technique. CANSI offers free refreshers to its members but fees for trail passes or lift tickets are not included. **Refer to [cansi.ca](https://www.cansi.ca) or email courses@pacific.cansi.ca for dates and details.**

XC Level 1: This is a 3-day course for those new to XC ski instruction. It will give you the skills and resources to teach classic and skate technique to beginner skiers using CANSI's teaching methodology with a focus on safety and skill progression. **Prerequisites:** You must be at least 15 years old at the start of the course. You should be able to demonstrate the required skiing skills on green terrain.

XC Level 2: This is a 4-day course for XC ski instructors with some instruction experience. It will prepare you for teaching a variety of skiing maneuvers to novice skiers using CANSI's teaching methodology. You will learn how to apply the methodology and technical concepts to assess and develop novice skiers who are looking for improved technique or more efficiency in their skiing. **Prerequisite:** CANSI XC Level 1 Certification.

Nordic Centre

Experience the magic of winter at Raven Lodge.

Mount Washington is rated as one of North America's top Nordic Centres. Perched on the edge of spectacular Strathcona Provincial Park, the Nordic Centre features Raven Lodge, a quintessential timber-framed ski lodge with full dining, retail, and rental options. XC skiers are treated to unparalleled views along 55 km of machine-groomed and classic set XC trails.

Explore the wilds of Strathcona Park as you meander through the snow-covered trees surrounded by rugged ice-capped mountains. The quiet serenity of the old-growth forests will do more for your wellbeing than a day at the spa. Snowshoeing at Mount Washington will transport you to a magical wonderland featuring 22 km of meandering trails with stunning views. Trail passes, rentals, and maps are available at Raven Lodge.



XC SKIING > SNOWSHOEING > FAT BIKING > RENTALS
CAMPS, CLINICS & PROGRAMS > EVENTS & MORE

mountwashington.ca/nordic

WELCOME TO RAVEN LODGE



DISCOVERY DAYS! LEARN TO XC SKI FREE! FROM DECEMBER 12-19, 2025, FEBRUARY 16 & MARCH 30-APRIL 5, 2026

Anyone ages 13+ who has never skied before can learn **FREE**** this winter with **Discovery Days**. The cross-country ski package includes a Nordic trail pass, 1.5hr lesson and XC equipment rentals. Advanced booking is required, please contact our team.

NEW Saturday Special Kids Discovery Days for ages 6-12:
Only December 20, 2025, & February 16, April 3, 2026.



ENJOY EXCLUSIVE GOLD PASS PERKS!

See more about pass perks on page 34.



NORDIC FEST (MARCH 21-22, 2026)

Join us for the fourth annual Nordic Fest at the Raven Lodge! Experience specialty Cross Country Ski clinics or Guided Snowshoe tours, browse local vendors, and groove to live music. Cap off the afternoon by roasting marshmallows over the fire. Activities cater to the whole family!

Looking to end the winter with an exciting and inclusive fun race? Sign up for the Vancouver Island Loppet on Saturday, March 21st. Visit the Strathcona Nordic Ski Club website for more details. www.mountwashington.ca/events

GET A NORDIC
6IXPAK
& SAVE OFF SIX
SHAREABLE TRAIL
PASSES



GET
EARLY BIRD
SAVINGS!

PURCHASE BY
DEC 1, 2025



NORDIC



Winter 2025/26



Vancouver Island, BC



888-231-1499



@mountwashington



www.mountwashington.ca



43

BEGINNER LESSONS: FIRST TIME ONLY

DISCOVER CROSS-COUNTRY SKIING (6+)

Welcome to the sport of cross-country skiing! This discounted lesson, rental and trail pass package is for those completely new to the sport of cross-country skiing! Discover lessons are available for both classic and skate skiing. However we highly recommend completing a classic lesson before trying skate.

CLASSIC: This introduction to classic skiing covers how to get up, move on the flats, snowplow to control speed down a small hill and herringbone to climb a small hill. At the end of this lesson, you will be able to successfully ski a Green trail on classic skis.

SKATE: Learn beginner skate ski techniques. The student will understand the skills and techniques to get up a hill and move along the flats. Skills include free skate, one skate and diagonal skate. It is strongly recommended that students have experience with classic skiing before taking a skate ski lesson.

Includes: 1.5-hour lesson, full-day trail pass, and rentals.

| CATEGORY | TIMES | PRICE |
|--------------------------|------------------------|-------|
| Child (6-12) | Daily: 10am, 12pm, 2pm | \$48 |
| Youth/Adult/Senior (13+) | Daily: 10am, 12pm, 2pm | \$78 |
| Family of 4 (6+) | Daily: 10am, 12pm, 2pm | \$218 |

ADD-ON: Additional child to family lesson **\$54**

Please note: Pre-booking highly recommended. Guests will be grouped together based on age. Group sizes are 6 guests per 1 instructor. Please indicate classic or skate at the time of booking.

RETURN TRIP (6+)

This next step beginner group lesson, rental and trail pass package for those who have taken our Discover Cross-Country Skiing lesson and looking to continue working on those beginner skills and techniques before progressing to a level 1 group lesson.

Includes: 1.5-hour lesson, trail pass, and rentals.

COMPLETE ENTIRE
LEARN TO GLIDE
PROGRAM & GET
50% OFF
A NORDIC 6IXPAK
& SEASONAL RENTAL

*For 2025/2026 season only.

Receive 50% off a 2025/2026 Nordic 6IXPAK and seasonal rental when the 3-lesson Learn to Glide Package is completed – all ages, no date restriction.



MISSION
AFFORDABILITY

| CATEGORY | TIMES | PRICE |
|--------------------------|------------------------|-------|
| Child (6-12) | Daily: 10am, 12pm, 2pm | \$58 |
| Youth/Adult/Senior (13+) | Daily: 10am, 12pm, 2pm | \$88 |

Please note: Pre-booking highly recommended. Guests will be grouped together based on age. Group sizes are 6 guests per 1 instructor. Please indicate classic or skate at the time of booking.

LEARN TO GLIDE (6+)

Mount Washington's Learn to Glide program is a combination of 3 of our most successful and popular lesson programs to help you get out on the trails faster and with more confidence. We have combined our Discover Cross-Country Skiing package with 2 of our group lessons.

Includes: 1.5-hour lesson, trail pass, and rentals.

| CATEGORY | PRICE |
|-------------------|-------|
| Youth/Adult (13+) | \$189 |
| Child (6-12) | \$119 |

Please note: Packages are available for classic or skate style cross-country skiing. Disciplines cannot be combined within one Learn to Glide package. This program is for anyone who is new to the sport of cross-country skiing, in either skate or classic disciplines.

PRIVATE & GROUP LESSONS

PRIVATE CROSS-COUNTRY SKIING (4+)

Whether you're new to the sport or a seasoned veteran, a private lesson is the best way to improve your skate or classic techniques. Our private cross-country ski lessons are 1.5-hours long and are scheduled with one of our CANSI-certified instructors.

| TYPE | DAYS | TIMES | PRICE |
|----------------|-------------|-----------------|-------|
| Private lesson | 7 days/week | 10am, 12pm, 2pm | \$109 |

ADD-ON: Additional person **\$45**



DISCOUNTED
ADD ONS! > ADD a Trail Pass or Rentals to any group lesson: \$15 Child, \$20 Youth/Senior & \$25 Adult!

GROUP SNOWSHOE TOUR (6+)

Our group snowshoe tours are a great way for you to enjoy quality time with family and friends. Your guide will lead you on a 1.5-hour trek through our scenic snowshoe trail network on novice-intermediate terrain. **Includes:** 1.5-hour tour, full-day trail pass, and rentals.

| CATEGORY | TIMES | PRICE |
|--------------------------|------------------------|-------|
| Child (6-12) | Daily: 10am, 12pm, 2pm | \$36 |
| Youth/Adult Senior (13+) | Daily: 10am, 12pm, 2pm | \$56 |
| Family of 4 (6+) | Daily: 10am, 12pm, 2pm | \$149 |

ADD-ON: Additional child to family lesson **\$29**

Please note: Guests of all applicable ages are grouped together into one tour. We do not offer age-specific group snowshoe tours.



Please note: Lessons and tours must be booked with a Nordic reservation agent. Fill out our booking request form at mountwashington.ca/nordic-lesson-request or phone 250-334-5763 to speak with a staff member.

GROUP CROSS-COUNTRY SKIING (6+)

Our group lessons are a great way to improve your skate or classic skiing, in a fun and supportive group environment. Each 1.5-hour lesson will work on techniques that will give you confidence to enjoy your time out on our trails.

Includes: 1.5-hour lesson in either classic or skate skiing.

| AGE | DAYS | TIMES | PRICE |
|--------------------------|-------------|-----------------|-------|
| Child (6-12) | 7 days/week | 10am, 12pm, 2pm | \$39 |
| Youth/Adult Senior (13+) | 7 days/week | 10am, 12pm, 2pm | \$49 |

Other: Please be sure to indicate classic or skate skiing and ability level at the time of booking. See ability guide for more info: mountwashington.ca/nordic-lessons

*Available for Level 1 (Beginner Skiers who have taken our discover lesson or have basic ski xc experience), Level 2 (Novice Skiers), Level 3 (Intermediate Skiers), Level 4 (Advanced Skiers)



PRIVATE SNOWSHOE TOUR (4+)

Enjoy a private 1.5-hour snowshoe tour led by one of our seasoned snowshoe guides. Take a leisurely walk through the forest on the Old Cabin Loop or enjoy a more advanced hike along Tree Beard's or Rossiter's Rise. Your guide will offer proper snowshoeing techniques and educate on the local alpine flora and fauna along the way.

| TYPE | DAYS | TIMES | PRICE |
|--------------|-------------|-----------------|-------|
| Private Tour | 7 days/week | 10am, 12pm, 2pm | \$79 |

ADD-ON: Additional person **\$15**

Please note: Children between the ages of 4-12 years old must be accompanied by an adult.



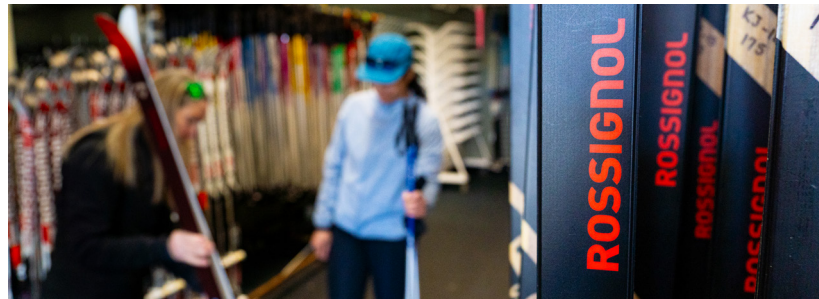
NORDIC

NORDIC RENTALS, RETAIL & SERVICES



Our full-service Nordic Rental Shop is conveniently located in the Nordic Centre's picturesque Raven Lodge. We feature a full line of Rossignol skate and classic skis and boots, MSR snowshoes and Rocky Mountain Blizzard Fat Bikes. Save time in the rental line and reserve your gear online.

We also offer a range of repair and maintenance services including hot waxing, binding mount, base clean, kick wax and more.



CLASSIC, SKATE, & SNOWSHOE RENTALS

| CATEGORY | ADULT | CHILD | TOT |
|-----------------------------------|-------|-------|-------|
| Classic or Skate Skis - full day | \$34 | \$21 | \$21 |
| Classic or Skate Skis - afternoon | \$24 | \$16 | \$16 |
| Snowshoes - full day | \$24 | \$15 | \$15 |
| Snowshoes - afternoon | \$19 | \$11 | \$11 |
| Seasonal Rentals | \$229 | \$149 | \$119 |

Please note: Full day hours: 9am-4pm · Afternoon hours: 1-4pm
Seasonal rentals are limited. Please book early to ensure availability.

TICKET & RENTAL PACKAGES

MISSION
AFFORDABILITY

| CATEGORY | ADULT | YTH/SENIOR/ STUDENT | CHILD | TOT |
|---------------------------------|-------|------------------------|-------|------|
| XC Ski Rental & Trail Pass | \$59 | \$54 | \$37 | \$37 |
| Snowshoe Rental & Trail Pass | \$36 | \$36 | \$24 | \$24 |

Please note: Pricing starting from the listed amounts, weekend and holiday rates apply.
* Prices may change and are only available for pre-bookings

SERVICES

REPAIR SHOP & SERVICE CENTRE

| SERVICE | PRICE |
|-------------------|-------|
| Hot Wax | \$28 |
| Kick Wax | \$15 |
| Base Clean | \$16 |
| Binding Mount | \$27 |
| Minimum Shop Rate | \$10 |
| Hourly Shop Rate | \$42 |

Please note: Drop-ins welcome but services may take up to 72 hours based on volume or request.



FAT BIKE & CHARIOT RENTALS

| CATEGORY | PRICE |
|--------------------|-------|
| Fat Bike - 2 hrs | \$42 |
| Chariot - full day | \$28 |
| Chariot - 2 hrs | \$23 |

Price for all ages.



RAVEN RETAIL

Open daily during the winter season, Raven Retail is a one-stop shop for all your Nordic needs.

Our knowledgeable staff can help you with cross country skis, boots and poles, snowshoes, apparel, and wax. We carry products from Rossignol, MSR, Kari Traa, Daehlie, Louis Garneau, Swix, and more!

Snowshoe Fondue

Enjoy a guided tour & a gourmet dinner!

NEW FOR 2026! Updated Menu & Skip the Snowshoe. Work up an appetite snowshoeing through the breathtaking Strathcona Provincial Park before returning to the Raven Lodge for a delicious gourmet fondue. Or, skip the snow and just enjoy dinner!

| SNOWSHOE FONDUE | TIME | PRICE |
|--------------------------|------|-------|
| Child (6-12) | 6pm* | \$59 |
| Youth/Adult/Senior (13+) | 6pm* | \$89 |

| NO-SNOW/NO-SHOE FONDUE | TIME | PRICE |
|--------------------------|-------|-------|
| Child (6-12) | 5pm** | \$44 |
| Youth/Adult/Senior (13+) | 5pm** | \$56 |

Available daily during the holidays, and Friday-Saturday between December 20, 2025 and March 22, 2026.

*Please arrive by 5:30pm to check in and be fitted for snowshoes, fondue 7-9pm.
** Skip the snowshoe and head straight to fondue dinner 5-7pm!

Advanced bookings required. For more information visit: mountwashington.ca/events



Raven Café

The Nordic Centre at Raven Lodge is a Cozy Après haven.

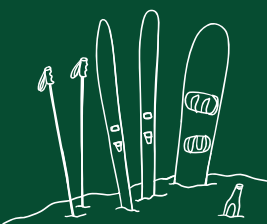
Get your day started with fresh baked goods, or an organic coffee from the barista bar. Daily lunch offerings include soups, fries, sandwiches, and salads. Live music après brings a lively feel to the ambiance of our Nordic Centre. Raven Lodge is a cozy hideaway from the hustle and bustle.

Open Daily! To view the menu and hours of operation visit: mountwashington.ca/dining



SLOPESIDE ACCOMMODATION

Follow the path to higher ground this winter and stay slopeside, right on mountain at Bear & Deer Lodges.



Bear and Deer Lodges are the ultimate trifecta of **ski-in-ski-out** lodging options. Experience our island mountain culture to its fullest and be transformed into a snowfall-watching, après-ski-going, first-tracks-claiming dynamo. **See you at first chair?**

- 1-bedroom units starting at **\$250/night**
- 2-bedroom units starting at **\$320/night**
- 3-bedroom units starting at **\$365/night**

Book your family winter wonderland getaway today!

ROOM ONLY RATES:

Midweek lift ticket & lodging package deals are also available:

> **AWESOME ALL WINTER!**
SAVE 15% OFF 2 NIGHTS/2 DAYS + KIDS 12 & UNDER SKI FREE!
starting from **\$302/per person**
Available midweek starting January 5, 2026

> **SPRING BREAK SAVINGS!**
SAVE 25% OFF 2 NIGHTS/2 DAYS + KIDS 12 & UNDER SKI FREE!
starting from **\$264/per person**
Available midweek starting March 2, 2026

Packages available on new bookings only. Rates based on 4 people sharing a 2-bedroom unit. Inquire for full details.



ENJOY
EXCLUSIVE
GOLD PASS
PERKS!

See more about pass perks on page 34.

For more information and to book, please visit: mountwashington.ca/slopeside

A SEASON OF CHANGES.



“Looking ahead, my vision for Mount Washington is rooted in three priorities: enhancing the guest experience, strengthening our community connections, and ensuring this mountain remains the destination for Vancouver Island’s skiing and mountain community.”

Hello Mount Washington!

Over the last few months, our team and I have embarked on new adventures as we prepare for the 2025/26 season together. Many of you have reached out with support regarding recent changes within our management team. Your encouragement means a great deal to us, and we are excited to have a dynamic group of leaders, driven by skiing and riding, who are dedicated to delivering your resort experience.

I have been incredibly fortunate to be part of this special mountain community for nearly 25 years. That time has allowed me to connect with multiple generations of pass holders, our mountain clubs, and village owners. It is not lost on me that our team has the honour and privilege of hosting Vancouver Island’s skiing community every single day they visit throughout the winter.

Like many of you, my journey in skiing began years ago as a kid with a family day on the slopes—sliding down a small community hill and making laps on an old rope tow with a grin from ear to ear. Over time, that passion grew into a career that has given me the chance to contribute to the operations, growth, and culture of this mountain and the ski industry as a whole.

The roots of my career are embedded in snow sports. Welcoming new families and guests to discover the mountain for the first time is truly where my heart lies. Mount Washington is more than a place to recreate; it’s a gathering place for adventurers of all kinds. Whether it’s snowshoeing or skate skiing in Strathcona Park, or getting stoked at the Sunrise Chair on a powder day, I couldn’t be more excited to be part of the opportunities ahead.

When I first arrived at Mount Washington, I couldn’t have imagined the lifelong

relationships, experiences, and memories this place would bring me, from working alongside some of the most dedicated staff in the industry to sharing unforgettable moments with our guests and community members.

Looking ahead, my vision for Mount Washington is rooted in three priorities: enhancing the Washy guest experience, strengthening our community connections, and ensuring this special place remains the destination for Vancouver Island’s skiing and mountain community. Every decision we make as a team will be guided by these principles, because our guests and community are the heart of all we do.

This year, you’ll see visible improvements across the resort designed to make your time here even more enjoyable. We’re upgrading sections of the Alpine Lodge—including restaurants and washroom facilities—to better serve your breaks and après gatherings. We’ve continued summer grooming of alpine and Nordic terrain, invested in more snow making, new snowcats, and added a Piston Bully winch cat to help our operators deliver the best possible surface in all conditions.

These are just a few of the many projects underway, with more details to come. Our summer offerings will continue to expand with enhanced events, summer camps, and continued investments in the Bike Park, building on the success of 2024/25. We are also developing a 5–7 year plan that includes additional snowmaking, lodge upgrades, hospitality improvements, and lift enhancements. Looking further ahead, we’re already planning future projects focused on expanding family offerings, improving base area flow, investing in sustainable practices, and celebrating the unique Island culture that makes Mount Washington so unique. Our goal is simple:

to ensure that skiing is alive and thriving here for generations to come.

None of this would be possible without the incredible team I work alongside. Our group of Directors brings more than 110 years of combined Mount Washington experience. Many of our staff members have been part of the resort for a decade or more, and their dedication shines through in every interaction. Like you, our team shares a passion for the outdoors, the mountains, and the people they meet each day.

For me, success isn’t measured only by the quality of our snow or the variety of our trails. It’s about investing in and growing the sport of skiing—the source of the smiles, laughter, and stories that echo from our lifts, lodges, and patios. Creating those moments is what motivates our team and what keeps our guests returning year after year.

Mount Washington Resort has always been about more than recreation—it’s about community. It’s about the parents teaching their kids to ski, friends swapping stories after a powder day, and the visitors discovering the beauty of Vancouver Island for the first time. Together, our team will continue building a mountain community that reflects these values and celebrates the spirit of adventure that unites us all.

As we look toward the 2025/26 season and beyond, I invite you to join us in shaping the future of Mount Washington. Your support, passion, and feedback are invaluable, and I’m excited to share this journey with you.

Thank you for being part of the Mount Washington community. See you for some hot laps this winter!

Sincerely,

Mike Manara, General Manager



A NOTE FROM
GM MIKE



Winter 2025/26



Vancouver Island, BC



888-231-1499



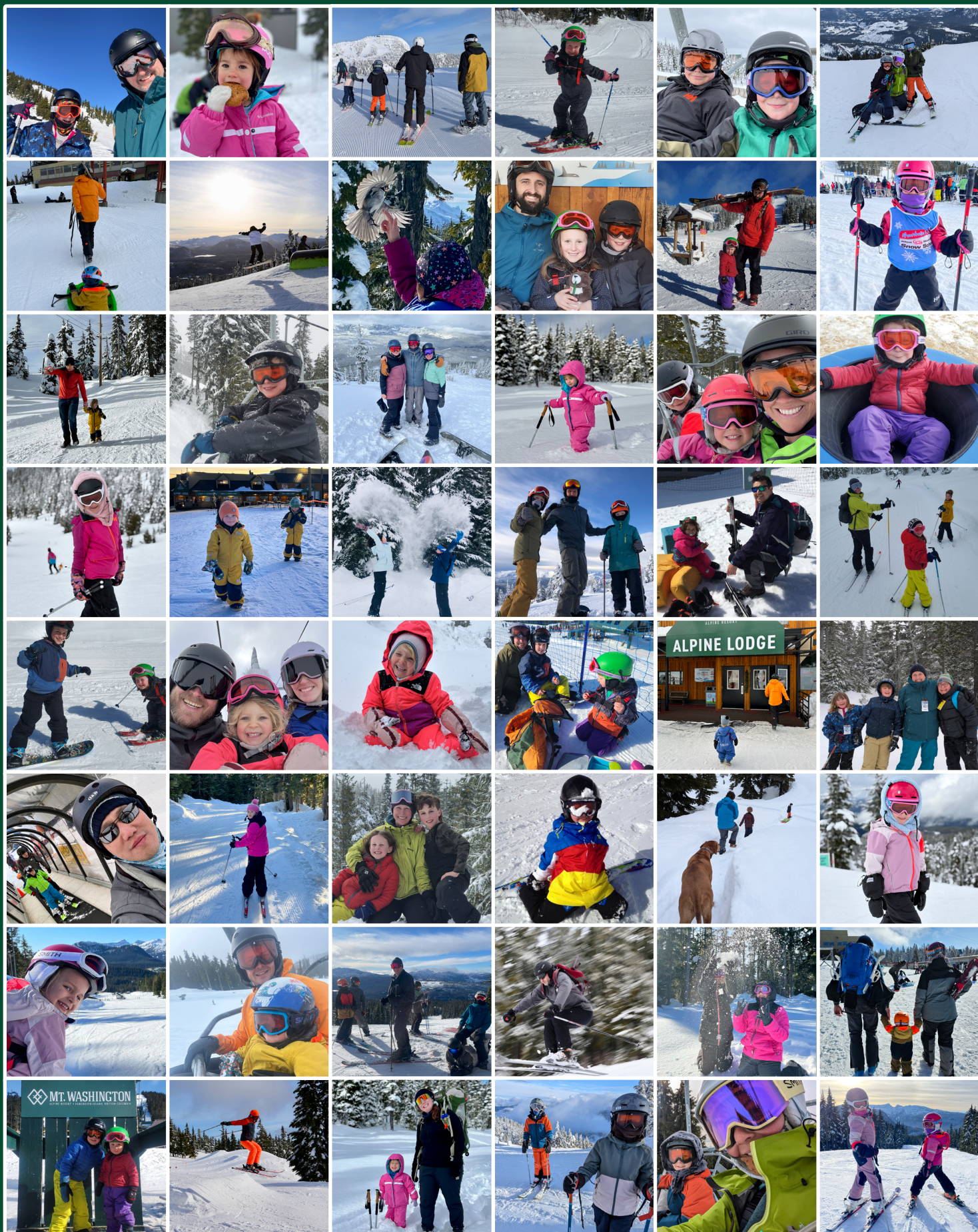
@mountwashington



www.mountwashington.ca



51



A MOUNTAIN OF WASHY MEMORIES, CHERISHED BY OUR LOCAL COMMUNITY.

❖ mountwashington.ca ❖